

# Ever Greene

THE JUNIOR LEAGUE OF GREENSBORO, NORTH CAROLINA, INC.

Winter 2014



*Making all  
the difference:*  
**OUR MEMBERS  
& OUR MISSION**

CONE PARTNERSHIP .....	10
LEADERSHIP SUMMIT .....	16

LIFELONG FRIENDSHIPS .....	32
FAREWELL TO CAROLYN .....	34

# Mortgages & More

Whether buying, building, or refinancing a home, CommunityOne Bank can help. It's our privilege helping people become homeowners!

## We offer:

- Fixed and adjustable interest rates
- Conventional and Jumbo loans
- FHA, VA and USDA loans
- Construction loans
- Renovation loans
- Loans with low down payments



**Kristi Beeler**  
kristi.beeler@community1.com  
Mortgage Loan Officer  
800 Green Valley Road, Suite 203  
Greensboro, NC 27408  
**office** 336.907.7420  
**mobile** 336.693.0808  
**fax** 336.907.7438  
NMLS ID: 457756



**Suzanne Mateen**  
suzanne.mateen@community1.com  
Mortgage Loan Officer  
1655 New Garden Road  
Greensboro, NC 27410  
**office** 336.855.3655  
**mobile** 336.420.2603  
**fax** 336.855.3673  
NMLS ID: 19705



[community1.com](http://community1.com)

©CommunityOne Bank, N.A.



CommunityOne  
Mortgage



# CHOOSE

## A Trusted Financial Advisor

---

## COMFORT IN PLANNING

---



**STEARNS**  
FINANCIAL GROUP



FINANCIAL *focus*  
— *for WOMEN* —

[www.StearnsFinancial.com](http://www.StearnsFinancial.com)  
800.881.7374

**GREENSBORO OFFICE**

324 W. Wendover Avenue, Suite 204  
Greensboro, NC 27408  
336.230.1811

**TRIANGLE OFFICE**

1450 Raleigh Road, Suite 105  
Chapel Hill, NC 27517  
919.636.3634



Fee **FO** Only<sup>®</sup>



Hello? She can't come to  
the phone right now...  
*She's "taking a bath"*

Been out of the swim of things? Hundreds of people living at River Landing have thrown away their to-do lists, giving them more time to get their feet wet. With home maintenance and cleaning taken care of, you can stay active with friends and family. At River Landing, guaranteed health care is available when and if you need it, so you can stop worrying about the future and make a splash in the present!

*Dive into your next chapter of life at River Landing.  
Call today and come visit your future home!*



FOR MORE INFORMATION  
CALL 336.668.4900

River Landing  
at Sandy Ridge

CELEBRATING 10 YEARS

*A Continuing Care Retirement Community*  
A Division of The Presbyterian Homes, Inc.  
Located in High Point, NC



[www.riverlandingsr.org](http://www.riverlandingsr.org)

The *best* time of your life begins here!



**WOMEN'S LEADERSHIP SUMMIT.....16**

Jenna Bush Hager discusses changing lives at 4th annual Summit on April 4.



**CONE PARTNERSHIP 10**

A new initiative is harnessing member passion to make significant and lasting change at Ceasar Cone Elementary School.

**ADVERTISERS' INDEX**

- Anderson Financial, Inc. ...15
- Aubrey Home ...37
- Austin Financial Management, Inc. ...40
- Barber Center for Plastic Surgery ...45
- BE Creative ...44
- Carolina Bank ...51
- CommunityOne Bank ...2
- DressCode ...37
- The Fresh Market ...48
- Greensboro Day School ...7
- Hanes Lineberry Funeral Home ...37
- Higgins Benjamin ...23
- Images by Amy ...37
- Josephine's ...15
- Junior League of Winston-Salem ...40
- Marsh Kitchens ...18
- Novant Health ...7
- Polliwogs Children's Boutique ...44
- The Red Collection ...7
- River Landing at Sandy Ridge ...4
- The Scout Guide ...28-29
- Simply Meg's ...15
- Solis Women's Health ...20
- Stearns Financial Services Group ...3
- Tarheel Financial Advisors ...40
- Well-Spring ...44



**LEAGUE SPARKS LIFELONG FRIENDSHIPS..32**

From Provisionals to Sustainers – seven women are “soul sisters” for life.



**FAREWELL TO CAROLYN..... 34**

After 25 years and countless memories, Carolyn Liu retires this spring.

Dear Reader .....	6	Sustainer Events .....	26
From the JLG President .....	8	2013 – 2014 JLG Provisionals .....	30
JLG Launches Nationwide Development Initiative .....	18	Community Advisors .....	36
Developing Leaders Through Women to Watch .....	19	Meet the JLG Board .....	38
Touch A Truck .....	21	2013 Awards .....	41
Notes from the Sustainer President ...	22	Q&A with Past Presidents .....	42
Forming Bonds Across Generations ...	24	2012-2013 Annual Report .....	46
Mentors Help Bridge the Provisional-Active Gap .....	25	Life in the League .....	49
		Like Mother, Like Daughter .....	50

# Leaping into an EXCITING YEAR



Anne Krishnan  
2013-2014 EverGreene  
Editor

The front handspring said it all.

Principal Chris Weikart's acrobatics at the first general membership meeting of the 2013-2014 League year symbolized our new partnership with Ceasar Cone Elementary School perfectly.

Exciting.

Ground-breaking.

Full of confidence that we will succeed.

Just a few months into our partnership with Cone, I am overwhelmed and moved by the tremendous power our members bring to bear when we are all working with a single mission toward a shared goal. The need at Cone is vast, but our members' passion for how we can change lives is even greater.

We're proud to highlight this community impact program and its potential in this issue of the EverGreene. Read on to learn more about Principal Weikart, as well.

Also in these pages, we look to the past, catching up with former presidents and sustaining members and paying tribute to Office Manager Carolyn Liu on the eve of her retirement this spring.

And we look to the future as we dig into the remarkable development the League offers our members through the Women's Leadership Summit, new Active mentoring and Women to Watch programs throughout the year.

The Junior League of Greensboro has accomplished tremendous things in our 86-year history. With that legacy as our foundation, we are poised to reach new heights this year.

I hope the stories that follow make you as excited about the League as I am. Have a wonderful year!

# EverGreene

THE JUNIOR LEAGUE  
OF GREENSBORO,  
NORTH CAROLINA, INC.

3101 WEST FRIENDLY AVENUE  
GREENSBORO, NC 27408

TEL: 336.852.JLG2 (5542)

FAX: 336.852.5401

juniorleagueofgreensboro.org

Editor

Anne Krishnan

Advertising

Martha Newton

Photographer

Mary Beth Luciani

Contributing Writers

Susie Baker

Lisa Carwile

Catherine Gates

Sarah Hayward

Melinda Wood

Communications Chair

Kara Jacobs

### 2013-2014 JUNIOR LEAGUE BOARD OF DIRECTORS

JULIE MALLOY  
COPELAND

President

MARY MARGARET  
HART

Marketing & Public  
Relations Chair

PAIGE BUTLER

President-Elect

KARA JACOBS

Communications  
Chair

LAURA CASHWELL

Community  
Vice-President

CARLEY MANN

Community  
Program Chair

TARA AYERS

Personnel  
Vice-President

ALEJANDRA  
MARQUEZ

At-Large Member

MARTHA NEWTON

Finance  
Vice-President

CAMERON MESSICK  
Nominating Chair

CARA DEROUNIAN

Corresponding  
Secretary

HEATHER NEAL  
Special Events Chair

SALEM METZGER

Recording Secretary

CATHERINE G. RICE  
Sustainer President

LISA CARWILE

Membership Chair

TERESA RUSSELL  
Bargain Box Chair

PAULETTE EVANS

Treasurer

CARLEY SWAIM  
External  
Planning Chair

JENNEFER GULLEDGE

At-Large Member

SHAWNA TILLERY  
Public Affairs Chair

SUSANNE HALL

Leadership  
Development Chair

KENDALL TOMALAS  
Placement Chair

PEGGY WILLIAMS

Meeting  
Arrangements Chair



# EVERY DAY!

It's a Great Day

**At The Day School,** students discover boundless opportunities to explore their intellectual curiosity, develop the courage to think independently, and foster a love of learning.

**Personal Growth**

**Phenomenal Resources**

**Outstanding Experiences**



**GREENSBORO DAY SCHOOL**

PK-12 • COLLEGE PREPARATORY • FINANCIAL AID

5401 Lawndale Drive • 336.288.8590

[www.greensboroday.org](http://www.greensboroday.org)  



# N:

**Emergencies don't wait,  
why should you?**

When an emergency happens, the expert care you need is closer than you think. Novant Health Kernersville Medical Center offers convenient access to nationally recognized emergency care around the clock. Our physicians and nurses are specially trained in emergency medicine, which means you'll receive specialized care when it matters most. And we take every step possible to reduce and even eliminate your wait time so that you're treated without delay.

Visit [NovantHealth.org/emergency](http://NovantHealth.org/emergency) to view current wait times and check-in online.



1750 Kernersville Medical Parkway, Kernersville

Fine Consignments for the Home since 1996

## The Red Collection

**Visit Often!**  
You'll find exceptional, affordable, and quality items to furnish your home.

**Rearranging or Moving?**  
Instead of an estate or tag sale, consign your quality pieces with us. We'll sell them for you - hassle free!

**New Items Arriving Daily:**

Antiques	Lamps	Art
Furniture	Mirrors	Accessories
China	Crystal	Silver

**Locations**

1201 South Holden Rd Greensboro, NC 27407 336.632.0091	1411 Mill St Greensboro, NC 27408 336.279.8519
--	--

[redcollection@bellsouth.net](mailto:redcollection@bellsouth.net)  
Monday - Saturday  
10am - 5:30pm

# Our League, Our Year, Our Time!

MAKING A DIFFERENCE IN 2013-2014



Julie Malloy Copeland  
President, 2013-2014

## GREETINGS FROM THE JUNIOR LEAGUE OF GREENSBORO!

### WHAT DOES A GREAT YEAR LOOK LIKE?

Most of us would agree that a great year includes something worth striving for and that it means a year devoted to something bigger, better, and grander than ourselves. Something that inspires us, energizes us, and propels us forward. Something that speaks to

our dreams and ultimately makes a difference in the world around us. With certainty, this is one great year in The Junior League of Greensboro!

## IT'S A MISSION-DRIVEN, MAKE-A-DIFFERENCE YEAR!

Speaking personally, the year has brought a wealth of meaning, purpose, wonder, and joy to my days. This is a year of true significance, with our League engaging women across the membership continuum in a collective effort to maximize our Mission's impact. I extend my heartfelt gratitude to our volunteers for their committed, forward-thinking, servant leadership. What a tremendous privilege and blessing to serve alongside such caring, like-minded women as President of our League. We are truly members on a mission, indeed!

Founded in 1926 and recognized as a Junior League in 1928, we are celebrating our 86th anniversary as The Junior League of Greensboro! We have a wonderful legacy and such a rich history in the Greensboro community, and we keep our Mission at the center of all we do. Just as vibrantly devoted as those who came before us, we remain an organization of women committed to promoting voluntarism, developing the potential of women,



and improving the community through the effective action and leadership of trained volunteers.

*The Junior League of Greensboro has been making a difference since its inception - providing countless volunteers and more than \$3 million to our community.*

This year, we have embarked on a multi-year partnership in a new community impact area focused on improving public education in Greensboro – specifically, providing financial support and trained volunteers to Ceasar Cone Elementary School, a state-identified priority school.

During this League year, we are looking beyond the limits of the everyday and are stretching ourselves to be even greater and to give back in even greater ways.

Our League invites you to stay up to date on the meaningful and dedicated work of our 1,000+ volunteers and the impact we are making in our community through our gifts of time and treasure. Please join us at one of our upcoming general membership meetings, special events, or leadership development opportunities.

Our League is well-positioned for an exciting and impactful future. Via our members and our mission, we will continue to make a significant difference in our community.



**OUR** *Mission* **COUNTS.**  
**OUR** *Members* **COUNTS.**  
**OUR** *Future* **COUNTS.**

*Thank you* for the **difference you make** through your support – **it truly counts.**

My very best,

**JULIE MALLOY COPELAND**  
 President, 2013-2014



# “This is Our School.”

## JUNIOR LEAGUE OF GREENSBORO HELPS CONE ELEMENTARY STUDENTS BRIDGE GAP FROM POTENTIAL TO SUCCESS

By Anne Krishnan

In the media center, volunteers are packing bags of books for kindergarteners to take home each week.

In the classrooms, students are learning about healthy eating by matching popular drinks to the amount of sugar they contain.

And in the auditorium, fourth- and fifth-grade girls are discussing how to avoid “girl drama” and writing their own rules for healthy friendships.

It’s just a week in the life of The Junior League of Greensboro’s partnership with Ceasar Cone

Elementary School, an initiative designed to make significant and lasting change at the school and in the education of its students.

The partnership further deepens the League’s long history of impact in Greensboro, which includes founding organizations such as the Gateway Education Center, the Greensboro Science Center, and Family Service of the Piedmont.

“Since 1928, The Junior League has been making a significant difference in the Greensboro community, and with certainty,

this is going to be another Mission-driven year,” President Julie Copeland said.

Following an extensive search – internally for a focus that resonated with members and externally for a community partner with whom the League could make a major impact – the League officially began its work with Cone in June 2013.

Full engagement began in earnest in the fall when the students returned to their classrooms, along with more than 100 Junior League volunteers.



## 2013-2014 JLG COMMUNITY PROGRAMS

“This is our school. This is your school,” Copeland told members at the volunteer orientation in August, exhorting them to take ownership of the League’s work there.

Many of Cone’s students face daily challenges of hunger, homelessness, and below-grade-level reading, said Principal Chris Weikart, but their biggest need is self-confidence and belief in their potential for greatness.

“The Junior League partnership is helping our students bridge the gap between potential and success through programs, exposure, and relationships,” he said. “The partnership is multi-faceted, but most importantly it is bringing love and support to our students, teachers, and families.”

The League is investing \$64,000 in 12 community programs at Cone during the 2013-2014 school year. Programming is focused on academic

progress, literacy, parent involvement, basic needs, student enrichment, health, and wellness.

Volunteers and these programs are giving Cone students long overdue attention, said Jodi Perlmutter, a first-grade teacher at the school for 15 years.

“As a teacher, I think this is the best thing to ever happen to the school,” she said. “We’ve never had anyone take us in and love us unconditionally like this.”

But The Junior League’s impact is going far beyond these formal programs. Internal groups are engaging with Cone as well, with Sustainers signing up as lunch buddies and Provisionals making bookmarks and teacher appreciation bags. The public affairs committee has requested that the city transportation department research placing Cone and all schools on the city bus map, and the Bargain Box committee has donated clothes for Cone’s students.

Members are taking initiative, as well. One member’s request resulted in a donation of 200 book bags to the school. Proactive thinking by the Executive Committee recruited the Colgate Dental Van to Cone

**BACKPACK BEGINNINGS AND OUT OF THE GARDEN:** Weekly deliveries of food for children at risk of hunger to take home over the weekends

**ENRICHMENT ASSEMBLIES:** Four school-wide enrichment assemblies

**GIRLCHARGE:** Programming and mentoring to help girls learn to treat each other with kindness

**GREEN HILL CENTER FOR NC ART TRAVELING TRUNK:** Interactive presentations using NC art

**JUNIOR ACHIEVEMENT:** Promoting financial literacy for 1st and 2nd grade students

**KIDS IN THE KITCHEN:** Hands-on curriculum to inspire children to make healthy lifestyle choices

**MEDIA CENTER INITIATIVE:** Revitalization of the Cone library

**“OH, THE PLACES YOU’LL GO”:** Dr. Seuss Day and Career Day

**CONTINUED ON NEXT PAGE...**

**PTA INITIATIVE:** Developing and guiding Cone's PTA

**RAISING A READER:** Rotating books through kindergarten students

**RESEARCH & DEVELOPMENT:** Researching and writing grants for future use at Cone

**SMOD SWAP SHOP:** Development of a standard mode of dress swap shop

**SUPPLIES:** Coordination and collection of donations of school supplies

**TECHNOLOGY:** Initiative to obtain grants and donors to provide personal learning devices to students



That kind of enthusiasm is exactly what Cashwell and longtime member Cherise Jones felt as they envisioned the impact the League could have if it focused its members' collective energy and talent in a single area. With the help of a talented pool of member volunteers, including teachers, reading specialists, social workers, principals, researchers, and developers, the League developed a slate of programs to address a broad range of social and academic needs at Cone.

All of the system's schools, but especially the lowest performing, need support from the community to be successful, said Randy Shaver, Guilford County Schools' Northern Region Superintendent.

"To have a group such as the Junior League making a commitment to give back to one of our neediest schools is tremendously important to our students and our staff," he said. "Your willingness to invest in our children, financially and otherwise, encourages them to do great things."

The League's activities start with the school and the needs of its parents, teachers, and

students. For instance, with transportation being a key hurdle in getting parents back to campus for PTA meetings at night, volunteers have looked at how they can move meetings into the community or piggyback on other activities at school to make the trip more productive.

As the number of enrichment opportunities for Cone continues to grow, Cashwell and Weikart also see an opportunity to build future sustainability by connecting the school with community partners who can continue to support the students even after the League's focus transitions to a new area. The partnership will extend two to three years until a natural ending point.

Many of these connections have come from other League activities. Thanks to a conversation regarding Touch A Truck, Cashwell learned of a grant through the Greensboro Aquatic Center to teach second-graders to swim. And thanks to the Bargain Box, the League was able to connect Cone's music teacher with a jazz professor at the University of North Carolina at Greensboro.

"When you see these kids and see their enthusiasm, there's no way you could not want to be a part of it," Cashwell said. "My hope is that we have a positive effect and that the children remember there are people out there who care about them. There are unlimited opportunities for them in this world."

for free dental screenings for 247 students, and members offered free follow-up care. Backpack Beginnings volunteers decided to bring goodies for teachers, as well as their usual food for students.

The partnership has renewed members' passion to go above and beyond their League requirements or obligations, said Community Vice President Laura Cashwell.

"Every day, I get emails full of ideas that our members have for Cone," she said.



# Cone Elementary BY THE NUMBERS

**456**

K-5 STUDENTS attend Cone

**95%**

qualify for **FREE LUNCH**

**13.3%**

of all End of Grade tests **PASSED** in 2012-2013

**\$64,000**

**INVESTED** in 12 League programs at Cone in 2013-2014

**30%**

student **TURNOVER** each year

**\$31,000**

or lower family income to qualify for **FREE LUNCH**

**13%**

of Cone students were **HOMELESS** last year

**100+**

Junior League **VOLUNTEERS SERVING** at Cone in 2013-2014

## PRINCIPAL LEADS WITH EMPATHY, CARING

In the early weeks of the 2013-2014 school year, Cone Elementary Principal Chris Weikart interrupted a meeting with Junior League leaders when he saw a bus turn around and re-enter the school driveway.

“I’ll be right back,” he said, anticipating trouble. To the women’s surprise, he boarded the bus and rode its full route, escorting a few students to their doors and talking with their guardians before the bus pulled away again.

“He is the key because he knows the kids,” said Community Vice-President Laura Cashwell. “He lived the life of most of those kids, so he has a special connection.”

Growing up outside Fort Worth, TX, Weikart remembers struggling in school until he learned to read in fourth grade. He recalls often being a troublemaker in elementary school but remembers fondly the educators who showed him that he could do more.

“I believe every student needs a caring teacher and principal who believes they will be successful, even when maybe the student does not,” he said.

As a result, he has chosen to spend his career working with “highly impacted students” such as those at Cone, and has been part of two other school reform



Weikart with JLG members and assistant principal Erica Phillips on the first day of school

initiatives in 11 years as a teacher and principal at the middle and high school levels. He is in his second year as principal at Cone.

Weikart, a father of three, completed his Master’s in School Administration at East Carolina University and is pursuing his doctorate in education at ECU, as well.

He has welcomed the League with open arms and has high hopes for the potential of what the JLG and Cone can do together.

“A lot of principals might be overwhelmed by 100 volunteers coming into their school,” said League President Julie Copeland. “But Chris says he is up for the challenge, and you know what? He doesn’t say no. He helps us to say yes.”



# Members thank families, volunteer together at Cone

Junior League of Greensboro members, partners, children, and friends gathered on November 9 for the first-ever Family Appreciation & Service Day. Designed to recognize and thank the many people who work behind the scenes to support JLG members and their work for the League, the event also offered a way for adults and children to serve the Cone Elementary School community together with projects including landscaping, cleaning, painting, and cutting materials for learning centers.

Active member Cindy Patterson worked with her boyfriend and his children to freshen up paint in a hallway. “I wanted to show them what the Junior League is all about and set a good example for making a difference in the community,” she said. “It’s a good opportunity for us to do something important together.”





**Lisa A. Anderson**  
**PRESIDENT/ANDERSON FINANCIAL INC.**



*"Plan Now For Your Future"*

3825 W. MARKET STREET • SUITE 102 • GREENSBORO, NC 27407  
 (336) 299-8280

Lisa Anderson is a Financial Consultant who works with individuals and businesses to establish and maintain long-term financial plans which are tailored to meet their specific investment needs. She focuses on serving her clients through independent investment counsel and providing the finest investment ideas and services available.

- Financial Planning
- Estate Planning
- Investment Strategy
- Life insurance
- Health insurance
- Corporate Retirement Accounts
- IRA/SEP/SIMPLES
- Education Accounts
- Stock/Bond Management
- Mutual Fund Analysis
- Asset Allocation
- Variable Annuity Analysis
- Fixed Annuities & CDs
- Transitional Counseling for Widowers, Divorcees, Retirees, Business Owners and Startup Companies.



MENTION THIS AD FOR A FREE CONSULTATION ON ANY OF THE ABOVE SERVICES

YOUR *favorite* NEIGHBORHOOD BISTRO...

IS NOW ALSO YOUR FAVORITE LOCAL STEAKHOUSE.

**Josephine's**  
 BISTRO & BAR

336.285.6590 JOSEPHINESBISTRO.COM  
 2417 SPRING GARDEN ST. , GREENSBORO

*Simply Meg's*

Bringing you the latest in fashion trends for all facets of your life, whether it's work, play, formal, casual or just plain stylin'!

**Savvy Style. Purely Personal.**

4 Collective • AG Jeans • Ali Ro • Alice & Trixie • Bailey 44  
 • BB Dakota • BCBG • Bella Dahl • Central Park West  
 • Commando • David Meister • Diane Von Furstenberg  
 • Dolce Vita Shoes • Drew • DVF Shoes • Envi  
 • Erin Ferherston • Escapada • French Connection  
 • Genetic Denim • Hanky Panky • Henry & Belle Denim  
 • Herve Chapelier • Hobo International • Hudson Jeans  
 • Hunter Dixon • Invisibelt • Jade • Joe's Jeans • Joie  
 • Joie Shoes • Joy Joy • Lilla P • Nell Couture  
 • Paige Premium Denim • Rebecca Minkoff • Sam Edelman Shoes  
 • Tart • Taylor • Tibi • Velvet • Vince • Waverly Grey • Zo

**The Shops at Friendly Center**  
 3334-123 W. Friendly Ave.  
 Greensboro, NC 27410  
 P: 336.272.2555  
 www.simplymegs.com

Follow us on Facebook and Instagram



Jenna Bush Hager  
Keynote Speaker

# Women's Leadership Summit

## HIGHLIGHTS POWER OF COMMUNITY INVOLVEMENT

By Sarah Hayward

Jenna Bush Hager will headline the 4th annual Women's Leadership Summit on April 4, 2014 at the Grandover Resort & Conference Center.

A fresh voice with a positive message, Hager will share how individual lives can be changed when provided with compassion, community support, and educational opportunities, mirroring The Junior League of Greensboro's community focus at Ceasar Cone Elementary School this year.

The Junior League believes that trained leaders make lasting changes in communities, and the community is strengthened through developing the potential of women. As an author, advocate, and teacher, Hager has experienced the impact of such involvement and will share her passion.

"We are thrilled to be bringing Mrs. Hager as our headline speaker for the 4th Annual Women's Leadership Summit," said League President Julie Copeland. "We are looking forward to her sharing our voice and vision on the role we can each play in making a positive and lasting impact in our community."

The Women's Leadership Summit develops the potential of women by giving participants an opportunity to learn from strong female leaders and benefit from social, career, and personal leadership development opportunities.

There will be a series of breakout sessions throughout the day aimed at different aspects of professional development led by widely recognized and respected leaders.

**"...SHARING OUR  
VOICE AND VISION  
ON THE ROLE  
WE CAN EACH  
PLAY IN MAKING  
A POSITIVE AND  
LASTING IMPACT..."**

Hager, daughter of former U.S. President George W. Bush, is currently the chair of UNICEF's Next Generation, an initiative dedicated to reducing the number of preventable childhood deaths around the world; a special correspondent for NBC; a contributor for the *Today Show* and editor-at-large for *Southern Living Magazine*. Passionate about literacy, education, and improving inner-

city schools, Hager was a teacher in Washington, DC and Baltimore, MD. A graduate of the University of Texas, Hager is a bestselling author of *Ana's Story: A Journey of Hope*, that focuses on her work for UNICEF.



The Junior League of Greensboro welcomes women of all ages, levels of leadership, and careers to this year's event. Corporate and table sponsorships are still available. Contact Heather Oakley at [heather@heatheroakley.com](mailto:heather@heatheroakley.com) or Susanne Hall at [hall.susanne@gmail.com](mailto:hall.susanne@gmail.com) for more information.

For League members and nonmembers alike, "the Summit is a wonderful and unique opportunity to develop as a leader in many different areas and to network and socialize amongst fellow peers and respected leaders in an enriching and encouraging environment," Oakley said.

The Women's Leadership Summit is one of The Junior League of Greensboro's largest annual fundraisers. All funds raised go directly toward supporting the Junior League's Mission of improving the community through promoting voluntarism, developing the potential of women, and improving the community.



**WHEN:** Friday, April 4, 2014

**WHERE:** Grandover Resort  
& Conference Center  
1000 Club Road  
Greensboro, NC 27407

**KEYNOTE SPEAKER:** Jenna Bush Hager

---

**TO SPONSOR OR LEARN MORE:**  
[www.JLGwomensummit.org](http://www.JLGwomensummit.org)

**TO VOLUNTEER:**  
[carolyn@juniorleagueofgreensboro.org](mailto:carolyn@juniorleagueofgreensboro.org)



## *Sponsor Spotlight:*

# THE SCOUT GUIDE



Tonya Cockman

The Junior League of Greensboro is excited to announce that the premier headlining sponsor for the Women's Leadership Summit is The Scout Guide with Greensboro editor Tonya Cockman. Originally started in Charlottesville, VA, The

Scout Guide is now a collection of 25 city guides and online resources highlighting local businesses and events.

The Scout Guide, along with Cockman, a JLG past president and active member, exemplify the same community focus as the Junior League. The organization's mission is to support locally owned business and celebrate "the unique, talented treasures found in our communities." Encouraging readers to "adopt a local lifestyle" and support their communities, The Scout Guide has developed an enormous national following.

The Junior League of Greensboro is thrilled to have the Greensboro Scout Guide as the lead sponsor of our Women's Leadership Summit!

# JLG LAUNCHES NATIONWIDE DEVELOPMENT INITIATIVE

**T**he Junior League of Greensboro will launch a new initiative at the 2014 Women's Leadership Summit to help women realize important life goals or dreams.

CLIMB 365 will offer three to five select participants a year-long developmental leadership experience, equipping and fueling them as they climb to reach new heights and achieve individual aspirations.

Each recipient will be equipped with professional support to provide developmental assessments and

one-on-one coaching throughout her journey. These women will video blog about their successes and challenges and will be followed by the membership of the Junior League of Greensboro and the general public.

The League will celebrate the accomplishments of the Climb 365 participants at the 2015 Women's Leadership Summit and ask them to jointly facilitate a session to share valuable leadership lessons gained through the CLIMB 365 process.

"I absolutely love my kitchen by Marsh Kitchens! It's beautiful, functional, durable and truly a custom design. The professional team at Marsh made the process of designing all of our cabinetry fun and flawless!"

PAIGE BUTLER, JLG PRESIDENT-ELECT



**MARSH KITCHENS**  
INTEGRATING DESIGN, INSTALLATION & SERVICE

2503 GREENGATE DR. • GREENSBORO, NC  
336-273-8196 • MARSHKITCHENS.COM

LOCALLY OWNED AND MANUFACTURED  
FINE CABINETS FOR YOUR HOME. SINCE 1906

# Developing leaders through Women to Watch

## LEADER INITIATIVE FOCUSES ON CORE COMPETENCIES

By Melinda J. Wood

Since 2009, The Junior League of Greensboro has developed members as leaders within the League and in the community through its Women to Watch (W2W) training and education series. The initiative helps members develop skills in leadership, build on personal strengths, and learn more about themselves.

In 2013-2014, W2W is exploring what it takes to be a leader from every angle by engaging the audience in topics that explore issues from finance to self-awareness.

“We want attendees to walk away with a concrete skill or deliverable results after each session,” said W2W Chair Tyson Hammer. “We want to help our

members develop the skills that make them leaders in whatever environment they are in.”

The monthly series focuses on six core competencies, described through the LEADER initiative listed in the graphic.

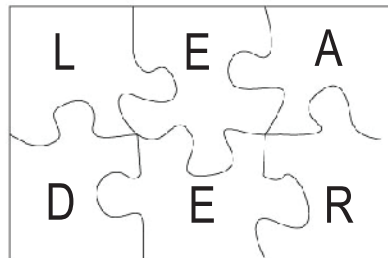
In fall 2013, Stephanie Walker of the Center for Creative Leadership and Walker and Associates Consulting Inc. trained members to lead through adversity. Walker facilitated hands-on adversity training that included small group discussions about times when attendees encountered adversity and how they handled the situations – followed by a larger group discussion on best practices for handling adversity.



Six essential leadership skills:

- L** eading in adversity
- E** ngaging with others to exert influence
- A** dapting yourself to each situation
- D** efining and striving for stability
- E** nlisting others to work with you as a team
- R** earranging to allow for flexibility

I am a leader: \_\_\_\_\_



W2W also has featured Abby Donnelly, partner at Sandler Training/Training & Development Solutions and author of *Networking Works!* Donnelly defined networking as building relationships for mutual gain and shared her 13-step strategy with W2W participants.

“The Junior League has a long history of bringing together a group of strong, talented women leaders with diverse experiences and backgrounds to work for meaningful change,” Donnelly said.

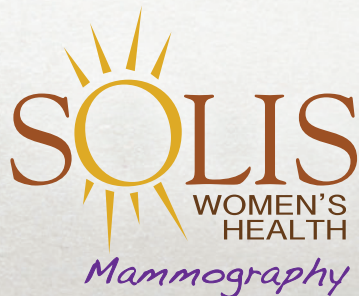
**CONTINUED ON NEXT PAGE**

# Jennefer Gullede

JLG Member at Large, and  
Solis Women's Health  
Client Relations Specialist



*Get The  
"Peace of Mind"  
Mammogram*



(336) 379-0941 | (866) 717-2551

[www.solishealth.com](http://www.solishealth.com)

1126 N. Church St. #200,  
Greensboro, NC 27401

## LEADERSHIP DEVELOPMENT

### CONTINUED FROM PAGE 19

"That is a great example of the power of building relationships for mutual gain."

Following additional workshops in the spring, the program will conclude with the 4th annual Women's Leadership Summit in April.

To become a LEADER expert and W2W graduate, members must attend five leadership sessions. A special ceremony and recognition of the W2W graduates will be held at the annual dinner and general membership meeting in May.

Member Brittany North said her experience and membership with The Junior League of Greensboro would not be complete without the Women to Watch program.

"The speakers who have participated in the program have provided dynamic and invaluable insight into topics such as networking, personal finance, happiness, life balance, and leadership," she said. "The program has not only developed my potential as a leader and volunteer, but has also allowed me opportunities that have carried over into my personal and professional life."

## B A R G A I N B O X

shop. donate. repeat.

*67 Years of Sustainable Fundraising for the Junior League of Greensboro*



B A R G A I N B O X   
Need it. Find it. Buy it.

122 N. Elm Street Downtown Greensboro, NC Join us on Facebook & Instagram @BBGreensboro



# TOUCH A TRUCK ON A ROLL IN ITS 4TH YEAR

On October 13, 2013, the sun was hiding, but approximately 2,000 members of our community were out in full force to experience and support the JLG's 4th annual Touch A Truck event.

Guests explored 32 trucks on display; watched more than 20 entertainers; visited numerous sponsor tables; and met Doc McStuffins, Dora the Explorer, and Bob the Builder.

Thanks to generous sponsors and community support, the 2013 event raised approximately \$36,000 toward the League's Mission and partnership with Caesar Cone Elementary School, the most successful Touch A Truck yet!





Catherine G. Rice  
2013-2014 Sustainer  
President

# SUSTAINER YEAR INCLUDES SERVICE AND SOCIAL OPPORTUNITIES

**W**elcome to each of our wonderful sustaining members for the year 2013-2014. We are comprised of approximately 664 women, including 69 emeritus members, 17 non-resident members, 7 honorary members and 29 new Sustainers! Our ages range 70 years. WOW! That is an incredible span and a testament to our dedication to our community and voluntarism.

To date, as your Sustainer President, I have participated in the board retreat at Shelton Winery, attended a leadership picnic, participated in two Leadership Academy sessions, made a presentation to the Provisional class, learned a flash mob dance and performed at a general membership meeting along with fellow League board members (the active President Julie Copeland is a pro at this and the mastermind), become a lunch buddy at Cone Elementary School and developed wonderful friendships with ladies half my age. They have influenced me in such a positive way and I am so blessed to feel their impact on my life!

A new partnership between The Junior League of Greensboro and Ceasar Cone Elementary School has enabled our Sustainers to serve through mentoring, being test proctors, decorating for the holidays, being a lunch buddy, and planning teacher appreciation day. We have also been busy collecting school supplies at all Sustainer events this year to contribute to the needs of this school. It is so rewarding to see the many smiling and welcoming faces when you step over the threshold

into this environment of learning. Please stop in and volunteer whenever you can, because you will receive much more than you give if you do!

Classic events also have headlined the Sustainer calendar, with the annual fall cocktail party chaired by President-Elect Leslie Conway starting us off. This event is beloved because we can show off our significant others and catch up with all of our friends! We were thrilled that Past Sustainer President Lisa Bullock and her husband Willie were our hosts, and everyone enjoyed gathering in their beautiful home to celebrate Sustainer involvement in our community.

November welcomed our annual speaker luncheon at Greensboro Country Club, and this year was an inspiration to all of us! Josh Cranfill, Webmaster for Gateway Education Center, led us through his personal journey from student at Gateway to wheelchair hockey coaching to playing poker. His message, entitled "Positivity Through Struggles," was powerful and one of encouragement and courage. If you missed the luncheon, be sure to Google Josh. You will be inspired!

In February, we enjoyed a late afternoon wine and cheese gathering at the home of Melanie Soles to warm our spirits. Chairperson Mary Beach planned a fun afternoon that brightened the winter blahs.

The new Actives party, hosted by Bonnie McAlister and her husband, Dan, is a springtime staple and



will take place on Sunday, April 13. BBQ on the lawn with all the fixings will welcome the Provisional classes to Active status and celebrate a job well done.

Well-Spring always promotes our sustaining membership with a gathering in the spring on their campus. This event provides sustaining members who may not be physically able to attend other events with a time to visit and socialize with fellow sustaining friends in a wonderful setting with delicious food and drink, all provided by Well-Spring. Come out and join us on April 10!

Finally, the spring luncheon/social is a mainstay for our membership. Whether in a member's home or in a local establishment, it is a time to reflect on our year and roles as servant leaders and honor our membership for years of continuous service to our

beautiful Greensboro community. Linda Lee and her committee have set the date for May 14, and it will be held in the home of Jane Gorrell. You will not want to miss being in this beautiful home and finding out who will receive the "Woman of Distinction" award.

We have had a great start to 2013-2014, but there is plenty in store for you. I look forward to continuing this journey and visiting with all of you on our next adventure! Thank you for the privilege of serving as your President this year.

With gratitude,

**CATHERINE G. RICE**  
2013-2014 Sustainer President

# HIGGINS ] ] BENJAMIN

◆ ATTORNEYS AT LAW ◆

- APPEALS ◆ BANKRUPTCY ◆ COMMERCIAL LITIGATION ◆ CONSTRUCTION
- CORPORATE ◆ ESTATE PLANNING & ADMINISTRATION
- FAMILY ◆ HOMEOWNERS' ASSOCIATIONS
- INTELLECTUAL PROPERTY ◆ LABOR & EMPLOYMENT
- MEDIATION & ARBITRATION ◆ REAL ESTATE
- TAXES ◆ TRAFFIC ◆ CRIMINAL DEFENSE

## COMPREHENSIVE LEGAL SOLUTIONS

101 W. Friendly Avenue, Suite 500, Greensboro, NC 27401

**TEL:** 336-273-1600 **FAX:** 336-274-4650 **WEB:** greensborolaw.com



# JLG members form bonds across generations

By Catherine Gates

Provisionals had the exciting opportunity this fall to connect with longstanding members of The Junior League of Greensboro with visits and special fall floral deliveries.

On November 23, Provisionals, the Board, and other active League members visited Sustainers Emeritus. These special ladies have been a part of the League for decades and continue to give their support.

"It is such a special opportunity each year for our provisional and active members to visit with our lovely sustainer emeritus members," said President Elect Paige Butler. "We enjoy making a personal connection with these ladies and it is truly our honor to recognize their many years of service to The Junior League of Greensboro."

Each Sustainer Emeritus was visited in her home and received a flower as a token of

appreciation for her dedication to the League. Provisionals and Actives separated into teams to visit approximately 70 ladies.

**“WE ENJOY MAKING A PERSONAL CONNECTION WITH THESE LADIES AND IT IS TRULY OUR HONOR TO RECOGNIZE THEIR MANY YEARS OF SERVICE TO THE LEAGUE.”**

As the newest members of the League, several Provisionals commented on how interesting it was to hear the stories and memories from women who have been members the longest.

"It is so special, as someone

who is just starting off with The Junior League, to hear from women who have already done it all," said new Active Ann Bencini. "They were the influential women who paved the way for us to continue to make an impact in our community. It's wonderful to have the opportunity to give them a small gesture of thanks for all that they have done."

Fall Provisionals visit Sustainers Emeritus annually, and the ladies look forward to the visits as a chance to see the new faces of the League and to hear the plans for the year ahead.

New Active Paula McMillan described the visit as an "intimate, unforgettable day visiting the private homes of three amazing women who honored us with their Junior League experiences, life stories, and well wishes for the future. We were left with a deep respect for each of them, individually, and the tremendous legacy of The Junior League."

# MENTORS HELP BRIDGE THE PROVISIONAL-ACTIVE GAP

By Sarah Hayward

**A**lthough voluntarism is one of the biggest parts of The Junior League's Mission, equally important is developing supportive relationships with other women.

The mentor-mentee program is an investment in the League's future leaders, with veteran League members sharing their experience and insight to support new Actives.

"Most of the mentors had someone invest in their lives in the League and that's why they want to give back," said program Chair Lindsay Morris. "While we all learned what the League was about while we were Provisionals, being a new Active is the time to develop the relationship component to being a member of the Junior League."

Easing these members' transition into the League is one of the mentor program's goals.

"It's difficult to transition from being a Provisional, where there is a lot of hand-holding, to being a new Active, where you're still not sure how you fit into the League," Morris said.

All new Actives are required to take part in the mentor program, but mentors volunteer their time in addition to their other League placements. Each mentor is paired with two mentees with similar interests and goals. They also may be paired by geography, profession, and even stage of life.

The mentors attended training together in August, where they met with Sustainer Bonnie McAlister, a leadership coach at Elon Law. McAlister talked with the new mentors about how to pursue relationships with mentees and how to be successful listeners. She also shared troubleshooting techniques.

The mentors meet with their mentees and frequently

check in with them on the phone or by email. One group, consisting of new moms and one soon-to-be mom, met for

two hours at Maxie B's and had coffee and cupcakes. Other groups have gotten together during First Fridays and have volunteered together at the Bargain Box. The groups celebrate accomplishments, work through professional issues, and provide support.

One success story was shared by mentor Cameron Messick and her mentee, Jennifer Morrow.

Morrow was Messick's first mentee several years ago. The two hit it off right away and learned they shared a number of things in common, including their children's preschool.

After the mentor program ended, Morrow was placed on Messick's committee for the ShowHouse. The two have continued to work closely and their friendship has grown. They still see each other regularly, and Morrow even gives Messick's son a ride home from preschool once a week.

Morrow is now a mentor herself.

"Meeting Cameron opened up many doors for me – opportunities to serve the League and the community and opportunities to meet new League members and friends," she said. "After having such a great experience with Cameron as my mentor, I wanted to be able to give back and help out a new member, just as she did for me."



Mentor Cameron Messick (right) and her mentee, Jennifer Morrow.

# November Annual Luncheon





# Fall Cocktail Party



# Sustainer Committee Organizational Meeting





# THE SCOUT GUIDE™

---

HIGHLIGHTS the PASSION and CHARACTER  
of small businesses, local artisans, and entrepreneurs.

---

GIVE LOCAL *Eat Local*  
DRINK *Play Local*  
LOCAL *Local*  
*read local*  
BANK LOCAL LOVE LOCAL  
LIVE *Heal Local*  
LOCAL *Shop*  
GO LOCAL *Local*

---

EXPLORE ALL OF OUR CITY GUIDES

*at*

WWW.THESCOUTGUIDE.COM

855.SCOUT55 | 855.726.8855



*The*  
**SCOUT**  
*Guide*<sup>™</sup>  
GREENSBORO, NC

FIND THE *best of* GREENSBORO ON OUR BLOG  
GREENSBORO.THESCOUTGUIDE.COM

Welcome to  
2013 ~ 2014  
Junior League of Greensboro  
**PROVISIONALS**

By Lisa Carwile, Membership Chair

The 2013-2014 Spring and Fall Provisional classes are an outstanding group of energetic and eager women who are already proving to be major assets to our League.

While some of these women have deep roots in the community, others have joined us from other areas of the state and country. These servant leaders juggle careers; family; and service to community organizations, their houses of worship, and their children's schools. But they also make time for themselves by doing mud runs, hot yoga, traveling abroad and locally, singing, playing sports, reading, cross stitching, cooking, couponing, public speaking, and spending time with others – whether for a glass of wine or an early morning run.

Are you worn out? They are super engaging and we are glad they are part of our membership and our Mission. Welcome to our Spring and Fall Provisional classes!

*2013*  
**FALL  
 PROVISIONAL  
 CLASS**



MAGGIE ASHWORTH	JESSI HODGES	MERRILL MCCARTY	TRICIA TETER
ANN BENCINI	JILL HOLLIS	ASHLEY MCGOUGH	LADONNA TISDALE
ANDREA BLANTON	RACHEL HUFFMAN	SYDNEY MCKINNEY	MELANIE VERGES
LEIGH ANNE CHURCH	JAMIE JONAS	PAULA MCMILLAN	EMMA VOGELSINGER
SHEA COX	JULIA JONES	CATHERINE MORELAND	MICHELLE WALSER
CHRISTINE DEAVER	RACHELLE JONES	ASHLEY POHL	KRISTIN WOOD
CANDACE DELANEY	ERIN JUSTAD	GIULIANA SCIABBARRASI	REKETTA WRIGHT
KRISTEN HAND	BETSY KEY	LYNDSEY SHARPE	CATHERINE YOUNG
ALLY HELSABECK	CHELSEA KIGER	RACHEL SPEARS	

*2014*  
**SPRING  
 PROVISIONAL  
 CLASS**



KRISTIN BELL	BRITTANY EVANS	TIFFANY LAM-BALFOUR	SARAH PELL
ELIZABETH CARR	KATHLEEN GRAHAM	EILEEN LAZORCHICK	LAURA REAVIS
SARAH CHEFFY	SARAH GRAVES	DARREN LIVINGSTON	FRANCES RODENBOUGH
ASHLEY COCHRANE	MEREDITH HALEY	KATHRYN MASON	JENNIFER SAWYER
SUSAN MARIE COOK	SUMMER HARPOLD	MEREDITH MCCANLESS	MEGAN SUDNIK
DEVIN CORRIGAN	NATASHA JORDAN	TAYLOR MYERS	KERRY SUNDERLAND
CHERYL DEARMAN	KELLI KEATING	BECKY NEIGHBOURS	STORMY WEBSTER
MELISSA ELLEMAN	ERIN KENNEDY	MARY LESA PEGG	



# *From Provisionals to Sustainers:*

## SEVEN MEMBERS' FRIENDSHIP TRANSCENDS TIME

By Susie Baker

**O**ne of the most lasting benefits of Junior League membership is the deep bonds of friendship formed through shared values and dedication to our community.

Even so, one group of Sustainers has the distinction of remaining fast friends, 24 years after they met as provisionals in 1990.

With different backgrounds, a 10-year age gap from the oldest to youngest, and lifestyles ranging from new mothers to single, they may have seemed like an unlikely group of friends at first. However, something clicked.

"We felt a pull towards each other," said Marty Keeton, part of the group that includes Jeri D'Lugin, Dabney Erwin, Melissa Kennedy Smith, Debbie Jobe, Elizabeth Oates, and Pam Nisbet.

The women's relationship was forged by attending meetings together and serving on committees such

as Ways and Means and Educational Arrangements.

Soon their friendship moved beyond League events. They often went to Oates' house for hors d'oeuvres before meetings or nibbled on Smith's homemade desserts afterwards. Jobe invited the group to the annual Christmas party at her house.

"In any friendship you have to make a conscious effort, and we made a conscious effort with birthday groups, spending time together at lunch, being each other's plus-one on trips, etc.," Erwin said.

They have shared stories and belly laughs at pool parties, bridal and baby showers, birthdays, last year's Showhouse Gala, and more. Many of their children and husbands formed close friendships, too. Now these women often participate in Sustainer activities together.

"Meeting these terrific women in 1990 made me realize that family isn't just a bond by blood," Smith

said. “We have been through so much through the years, and I will always consider them my ‘soul sisters’ for life.”

“The Junior League is intertwined within our relationships,” D’Lugin added.

The League helped them hone leadership skills and volunteer training. Now many of the women volunteer at charities and nonprofits outside of the League. Erwin started the March of Dimes Chefs’ Auction, which recently celebrated its 22nd year, and Jobe took the reins after Erwin. Erwin also raised \$1.5 million over 10 years for a rare immunodeficiency disease her son has. “The Junior League gave me the skills and knowledge to go out on my own,” Erwin said.

Through all seasons of life, they have supported each other. “We kept up with our friends’ dating lives, their princes and frogs,” Oates said.

They have seen each other through weddings, pregnancies, adoptions, and graduations. They’ve comforted and consoled each other through loss, sickness, divorce, and disappointment. Even when life became busy with careers, growing families, and moving away from Greensboro, they have made a point to stay in touch.

“We always know that we have each other’s heart and each other’s back,” Keeton said.

When Jobe moved away, D’Lugin suggested she join The Junior League in her new city. It’s “a built-in avenue for friendships and a place in the community,” D’Lugin explains.

What can Junior League members do to build these kinds of lifelong friendships?

“Celebrate each other whenever you can,” Keeton suggests.

Jobe and D’Lugin add, “Get to know people from all different backgrounds. You have to have friends you can go through life with and have those life experiences with.”



**“WE HAVE BEEN THROUGH SO MUCH THROUGH THE YEARS, AND I WILL ALWAYS CONSIDER THEM MY ‘SOUL SISTERS’ FOR LIFE.”**





*Celebrating a  
quarter-century  
of dedication:  
Carolyn Liu*

## MANY THANKS TO CAROLYN AS SHE PREPARES TO RETIRE IN MAY

By Susie Baker

**O**n Carolyn Liu's desk, Alabama head coach Nick Saban smiles out of a picture frame next to the hand-scrawled words, "Happy Birthday Carolyn! Roll Tide, Roll!" Amid fresh flowers, sheaves of papers, and an assortment of business card holders, The Junior League of Greensboro office manager answers phone calls and email requests one after another.

Carolyn came to Greensboro in 1986 with her husband, Tony. Flipping through the newspaper, she saw that The Junior League was hiring an office manager. Carolyn at first declined the job, but after thinking it over, she called the next morning to accept.

That was 25 years ago.

"Everything has changed," Carolyn says with a laugh. "No longer midday meetings. Board meetings always began with The Junior League prayer of service. We had no filing system, and now we have copies of everything."

Carolyn remembers when the headquarters was located on State Street. She occasionally would step out of the office to pick up work requests from members with children in their cars. "At times it was like a drive-thru, but I didn't mind. I was always happy to assist," she says.

During a fundraising year, members would come to the headquarters to rehearse for the Follies. "There was dancing and music in the Board Room, and I loved it! One member sounded just like Reba McEntire," she recalls.

Though times changed and her workload increased, Carolyn chose to stay with The Junior League. When asked why, she says simply, "The members. It's a very diverse group of women. I have never met a nicer group of women." She smiles. "I've been privileged to have been able to work with so many amazing women and past presidents."

Yet after 25 years of camaraderie and invaluable service to the League, she plans to retire on May 30,



## Words of farewell for Carolyn Liu

■ “Leading a volunteer organization depends on organization and stability. Carolyn has not only been an ‘anchor’ throughout her 25 years of service, but she was an anchor for me. There is no way I could have been effective on a day-to-day basis in my role as President or President-Elect of the League without Carolyn beside me. She had an extraordinary commitment to doing everything with such care and style. She epitomizes what it means to be ‘best in class’ and I will forever be grateful for her.”

TIFFANY M. FRANKS  
JLG PRESIDENT  
2005-2006

■ “When I was asked to become President of the League in 2006, one of the first things I did was call Carolyn at the office to make sure that she had no immediate plans to retire... I wasn’t prepared to step into the role and leave my Sustainer status without her by my side! Carolyn has always been the common thread, the keeper of the history, and the link from one League year to the next.”

DANIELA HELMS  
JLG PRESIDENT  
2006-2007

■ “Carolyn’s warm smile, kindness, and dedication to the League and our members is a rare combination that I truly valued when I served as President. The knowledge that she has gained through her years of service is the golden thread that keeps our leadership on track from year to year, and the time and energy she has given to the League has been a true gift to all who served.”

LISA A. ANDERSON  
JLG PRESIDENT  
2010-2011

■ “Carolyn was a pure joy to work with last year! She cares very deeply about our organization, our mission, and all of our members. Carolyn does so much behind the scenes, and over the past 25 years she has been a huge key to the League and our impact in the community. Carolyn is loved and will be greatly missed!”

EMILY FAUCHER  
JLG PRESIDENT  
2012-2013

2014. In her retirement, Carolyn says she will enjoy the outdoors, spend time with her two grandchildren, take care of things at home that she never had adequate time to do, and travel to Alabama to visit her husband’s family.

She advises members to approach their time in the League with enthusiasm. “Take it all in,” she says. “Have a good time. This is a great organization for women to come meet others their age, get involved in the community, and give back.”

*JLG benefits from  
involvement of civic leaders*

MANY THANKS TO THE CIVIC LEADERS PROVIDING SUPPORT AND GUIDANCE TO OUR PROGRAMS AS MEMBERS OF THE 2013-2015 COMMUNITY ADVISORY BOARD.



**MARGARET ARBUCKLE**  
Retired Executive Director  
Guilford Education Alliance  
JLG SUSTAINING MEMBER



**ALAN DUNCAN**  
Turning Point Litigation  
Van Laningham  
Duncan, PLLC  
Chairman, Guilford  
County Board of  
Education



**CYNDY HAYWORTH**  
President  
Junior Achievement of  
Central North  
Carolina



**RANDY SHAVER**  
Superintendent of  
Schools (Northern  
Region)  
Guilford County  
Schools



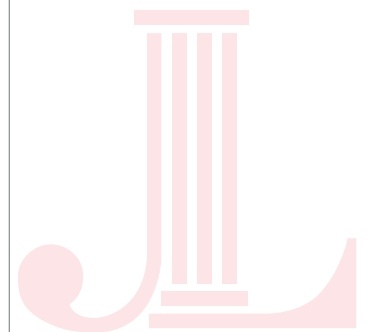
**CANDI CARTER**  
Vice-President  
Branch Manager/  
Business Banker  
NewBridge Bank



**GUNNAR FROMEN**  
Executive  
Vice-President  
Carolina Bank



**JIM MELVIN**  
President  
Joseph M. Bryan  
Foundation





— *Decorative flourish* —

# DRESSCODE

## *Work. Play. Party.*

DressCode Consulting offers a unique and individualized approach to image and presence. DressCode Consultants design a strategy for your personal brand.

CONSULTING & RETAIL

— *Decorative flourish* —

*Owner & Sustainer, Maribeth Hudgins*

1805 PEMBROKE ROAD  
WWW.DRESSCODENC.COM

**illuminating lives.**



Dignity® A network of leading Funeral Services



Portraits \* Maternity & Newborns \* Seniors \* Weddings & Engagement

Amy Johnson  
Greensboro, NC  
910.639.0278

On location  
natural light  
photography



www.imagesbyamync.com

# Aubrey A.H.O.M.E

**Everything for the Home!**

Antiques, Upholstery, Furniture,  
Accessories, Lighting  
Consignments, Original Art and  
Design Services

Tues-Fri 10-6, Sat 10-5  
\*\* Designers Welcome



Sharon Nussbaum • 3500 Old Battleground Rd, Suite A  
aubreyhomedesign@gmail.com • (336) 617-4275  
www.aubreyhomedesign.com



**JULIE MALLOY COPELAND**  
President

COMMITTED, FORWARD-THINKING  
SERVANT LEADERS GUIDE THE JUNIOR  
LEAGUE OF GREENSBORO IN 2013-2014

*Executive Committee*



**PAIGE BUTLER**  
President-Elect



**LAURA CASHWELL**  
Community Vice-President



**TARA AYERS**  
Personnel Vice-President



**MARTHA NEWTON**  
Finance Vice-President



**CARA DEROUNIAN**  
Corresponding Secretary



**SALEM METZGER**  
Recording Secretary



# Board of Directors



**LISA CARWILE**  
Membership Chair



**PAULETTE EVANS**  
Treasurer



**JENNEFER GULLEDGE**  
At-Large Member



**SUSANNE HALL**  
Leadership Development  
Chair



**MARY MARGARET  
HART**  
Marketing & Public  
Relations Chair



**KARA JACOBS**  
Communications Chair



**CARLEY MANN**  
Community Program  
Chair



**ALEJANDRA MARQUEZ**  
At-Large Member



**CAMERON MESSICK**  
Nominating Chair



**HEATHER NEAL**  
Special Events Chair



**CATHERINE G. RICE**  
Sustainer President



**TERESA RUSSELL**  
Bargain Box Chair

Board of Directors CONTINUED



**CARLEY SWAIM**  
External Planning Chair



**SHAWNA TILLERY**  
Public Affairs Chair



**KENDALL TOMALAS**  
Placement Chair



**PEGGY WILLIAMS**  
Meeting Arrangements  
Chair

panic ----- calm

**The shortest distance between these two points IS A FINANCIAL PLAN.**

Let an independent financial advisor help you craft a plan that puts your interests and objectives first. That's an approach that makes sense in these—or any—market conditions.

**AUSTIN**  
FINANCIAL MANAGEMENT, INC.

**Jim A. King, III, MBA, CFP®**

600 Green Valley Road, Suite 207, Greensboro, NC 27408  
Toll-Free: 855.281.3292 • Phone: 336.231.8910  
jim@austinfinancialman.com • www.austinfinancialman.com

Securities and advisory services offered through Commonwealth Financial Network®, Member FINRA/SIPC, a Registered Investment Adviser.

Wealth Management & Financial Planning



**Ryan Glover, CFP®**  
[www.tarheeladvisors.com](http://www.tarheeladvisors.com)

TOUR  
**FINE SPACES**  
Junior League of Winston-Salem

**SAVE THE DATE!**  
**SATURDAY, MARCH 22, 2014**

Mark your calendars for the 9th Annual Tour of Fine Spaces, featuring beautifully new & renovated homes throughout Winston-Salem.



[www.jlws.org/touroffinespaces](http://www.jlws.org/touroffinespaces)

# Four outstanding women honored in 2013

Each year, the Junior League of Greensboro presents four awards to outstanding members. One award is given to a provisional, one award to a sustainer, and two awards are given to active members for exceptional service to the League and the community of Greensboro.

The Junior League of Greensboro congratulates our members who were recognized with these prestigious awards in 2013.



**LISA  
ANDERSON**  
Kathleen  
Price Bryan  
Award



**BONNIE  
MCALISTER**  
Sustainer  
Woman of  
Distinction  
Award



**AGGIE  
INGOLD**  
President's  
Service  
Award



**LINDSEY  
EVANS**  
Provisional  
"Above and  
Beyond the  
Call" Award

# PAST JLG PRESIDENTS SHARE THEIR WISDOM

By Melinda J. Wood

**T**he Junior League of Greensboro is fortunate to have a rich 86-year history filled with outstanding leadership from our past presidents. These women embody the League's Mission to promote voluntarism, develop the potential of women, and improve the Greensboro community. Without question, we have benefited from their wisdom, experience, and passion. Recently, the EverGreene reached out to several past presidents to learn from their personal journeys. We hope their wisdom will inspire you to reach for your dreams, commit more deeply to voluntarism, and always remain open to new opportunities.

## WHAT DOES THE JUNIOR LEAGUE'S MISSION MEAN TO YOU?



Ann Lineweaver  
JLG President 1972 – 1973

“The most important part of the League's Mission is educating women about their community's needs and preparing them for leadership roles in that community through hands-on placements and responsible positions within the League.”

## WHAT ADVICE WOULD YOU GIVE THE LEAGUE?



Susan Schwartz  
JLG President 1986 – 1987

“Be aware of the outstanding past accomplishments of which the League can boast and make your mark now and into the future. Be excellent. Be informed. Do not be afraid to take a stand and be responsible. Make certain Greensboro is headed in the right direction.”

## WHAT ADVICE WOULD YOU GIVE ACTIVE MEMBERS?



Ashley E. Staton  
JLG President 1996 – 1997

“To embrace all that the League has to offer – training, opportunity for leadership – and get out of your comfort zone to serve our great community and truly make a difference in the lives of others. Always remember the friendships. Some of my very closest friends have come from meeting and knowing them through the League. Such a gift!”



## WHAT DID IT MEAN TO YOU TO SERVE AS JUNIOR LEAGUE PRESIDENT?



"I am forever grateful for the opportunity to have served as president of The Junior League of Greensboro. Serving as the president gave me countless gifts, opportunities, and experiences. When I think back on my time in leadership, I rarely think about the challenges, the

numerous meetings, or the missed family dinners. Instead, I remember the women who inspired me to do my absolute best. The membership and leadership was, and still is, full of women who loved their community and gave unselfishly of their time and talents. I was humbled to represent such a dedicated group.

My service in the League pushed me to stretch myself and continue to grow personally in many ways. The capacity to see a challenge and the confidence to be a part of the solution; the ability to value different viewpoints; and the realization that any goal is achievable with strong communication, a good plan and the right people are all abilities that I developed through my League leadership. I continue to utilize those skills in every aspect of my life.

In short, being the president of The Junior League meant a tremendous amount to me. My commitment to service in the League was truly a commitment to making myself the best person I could be and pursuing the goal of lifelong service."

**Stephanie Billings**  
JLG President 2007 – 2008

## WHAT DO YOU THINK IS THE LEAGUE'S POTENTIAL FOR FURTHER IMPACTING GREENSBORO?



"Our potential is limitless. In my 13 years as an active member of the Junior League, I have never met another organization that is filled with such intelligent, respected, forward-thinking, creative, and positive members.

In the past few years, I have seen ideas turn into long-range plans with measurable goals. I think that our partnership to help education in our community and starting with Cone Elementary is just the beginning of something huge. I could see this type of program being rolled out into more individual schools, entire school systems, and eventually across the country.

Junior League of Greensboro women are not scared of a little challenge, nor are they scared to dream big. I think our community programming will have a positive and lasting impact on the Cone Elementary school students, family, and staff, but it can continue to grow and evolve into something as big as we can imagine. My hope is that we are providing benefits for these children and families that will change their futures and path in life."

**Susan Davis**  
JLG President 2011 – 2012

# 20 YEARS OF EXCELLENCE

For over two decades, Well-Spring residents have enjoyed exceptional retirement living with the most diverse mix of social activities, affordable housing options and healthcare plans in the area. For you, that means the independent and diverse lifestyle you're used to.

Come visit Well-Spring's award-winning community, where life is shaped by choices not circumstances.

Contact us today for a complete package of information.

www.well-spring.org  
(336) 545-5468 • (800) 547-5387  
4100 Well Spring Drive, Greensboro, NC 27410



CARF/CCAC  
ACCREDITED  
SINCE 2003



# polliwogs

CHILDREN'S BOUTIQUE



*Custom Monogramming  
Available on In-Store Items*

1724 Battleground Avenue, Suite 104 • Greensboro, NC 27408  
336.275.1555

www.polliwogs.com



**Your Online Source for  
Unique and Affordable  
Personalized Gifts**

Stationery • Holiday Cards • Notepads  
Accessories & More

[www.becreativegoods.com](http://www.becreativegoods.com)

BE Creative also offers innovative solutions to Marketing and Administrative needs. By using BE Creative Services, you can effectively and economically fill the voids in your business plans.



# BARBER CENTER

for PLASTIC SURGERY

SPECIALIZING IN COSMETIC SURGERY & SKIN CARE

## COSMETIC SURGERY

- Body Contouring
- Tummy Tucks
- Breast Reduction
- Blepharoplasty
- Breast Augmentation
- Eyelid Lift
- Liposuction
- Facelift

## SKIN CARE

- Facials
- Chemical & Medical Peels
- Laser Hair Removal
- IPL Treatments
- Obagi Skin Care

## NON-SURGICAL PROCEDURES

- CoolSculpting®
- Facial Rejuvenation
- Botox® Cosmetic
- Dysport™
- Perlane®
- Restylane® Treatments
- Laser Tattoo Removal

FREE SEMINARS  
on Cosmetic Surgery and  
Skin Care visit  
[www.barberplasticsurgery.com](http://www.barberplasticsurgery.com)  
for details

## DR. BARBER VOTED

One of America's Top Plastic Surgeons 2004-2013  
by Consumers' Research Council of America.



Dr. W. Byron Barber II, facs • Certified American Board of Plastic Surgery

1591 YANCEYVILLE ST. • SUITE 100 • GREENSBORO, NC  
275.3430 • [WWW.BARBERPLASTICSURGERY.COM](http://WWW.BARBERPLASTICSURGERY.COM)



# 2012-2013 Annual Report

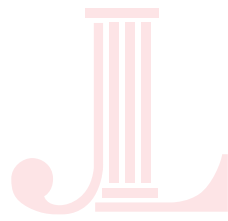
## JUNIOR LEAGUE OF GREENSBORO, NORTH CAROLINA, INC.

### STATEMENT OF ACTIVITIES FOR THE YEARS ENDED MAY 31, 2013 AND 2012

REVENUES, GAINS & OTHER SUPPORT	2013	2012
SALES – BARGAIN BOX THRIFT STORE	\$ 440,146	\$ 428,947
Less: Value of donated items sold	398,505	396,098
Gross profit on sales	\$ 41,641	\$ 32,849
MEMBERSHIP DUES AND FEES	119,372	109,677
CONTRIBUTIONS:		
Cash	2,000	49,267
Materials and inventory for thrift store	402,680	401,884
In-kind donations	99,991	1,848
ShowHouse pledges	246,233	—
Legacy campaign	—	(2,210)
FUNDRAISING EVENTS:		
Revenues	334,128	84,144
Expenses	(267,997)	(56,712)
OTHER REVENUES (LOSSES):		
Interest income	6,461	5,769
Loss on disposal of property and equipment	—	(60)
Unrealized gain (loss) on investments	20,345	(11,552)
<b>TOTAL REVENUES, GAINS &amp; OTHER SUPPORT</b>	<b>\$ 1,004,854</b>	<b>\$ 614,904</b>
EXPENSES	2013	2012
PROGRAM SERVICES:		
Community projects	\$ 137,490	\$ 146,915
Training and education	125,640	116,611
MANAGEMENT AND GENERAL	98,962	64,122
FUNDRAISING:		
Bargain Box thrift store	243,147	234,247
Other	111,037	17,221
<b>TOTAL EXPENSES</b>	<b>\$ 716,276</b>	<b>\$ 579,116</b>
<b>INCREASE IN UNRESTRICTED NET ASSETS</b>	<b>288,578</b>	<b>35,788</b>
<b>NET ASSETS, BEGINNING OF YEAR</b>	<b>829,986</b>	<b>794,198</b>
<b>NET ASSETS, END OF YEAR</b>	<b>\$ 1,118,564</b>	<b>\$ 829,986</b>

### STATEMENTS OF FINANCIAL POSITION MAY 31, 2013 AND 2012

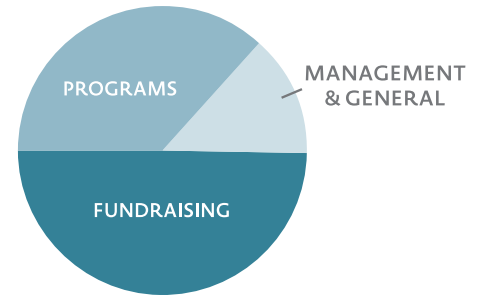
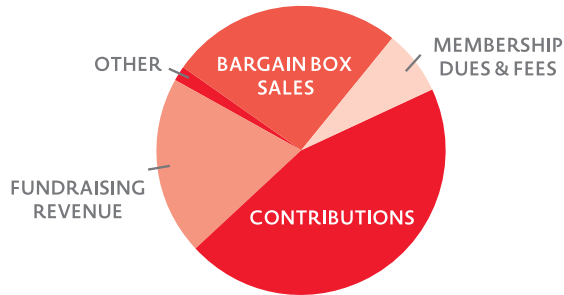
ASSETS	2013	2012
CURRENT ASSETS		
Cash and cash equivalents	\$ 584,540	\$ 352,055
Pledges receivable, net of allowance \$8,318 in 2013 and \$88 in 2012	25,815	3,621
Accounts receivable	47,397	18,168
Accrued interest income	145	154
Bargain Box inventory	72,195	68,020
Prepaid expenses	14,468	12,859
<b>TOTAL CURRENT ASSETS</b>	<b>\$ 744,560</b>	<b>\$ 454,877</b>
PROPERTY & EQUIPMENT		
Furnishings and equipment	\$ 110,039	\$ 108,161
Store fixtures	20,496	17,884
Land	130,000	130,000
Building	595,300	595,300
	\$ 855,835	\$ 851,345
Less: Accumulated depreciation	189,557	168,708
<b>TOTAL PROPERTY &amp; EQUIPMENT</b>	<b>\$ 666,278</b>	<b>\$ 682,637</b>
OTHER ASSETS		
Pledges receivable – noncurrent	\$ 71,941	\$ 4,593
Endowment fund	142,484	119,276
Deposits	1,644	1,363
<b>TOTAL OTHER ASSETS</b>	<b>\$ 216,069</b>	<b>\$ 125,232</b>
<b>TOTAL ASSETS</b>	<b>\$ 1,626,907</b>	<b>\$ 1,262,746</b>
LIABILITIES	2013	2012
CURRENT LIABILITIES		
Accounts payable	\$ 11,530	\$ 13,080
Accrued liabilities	68,077	—
Sales taxes payable	2,206	2,141
Payroll taxes payable	5,164	3,949
Unearned revenue	114,652	101,590
<b>TOTAL CURRENT LIABILITIES</b>	<b>\$ 201,269</b>	<b>\$ 120,760</b>
LONG-TERM LIABILITIES		
Bank line of credit	\$ 306,714	\$ 312,000
<b>TOTAL LIABILITIES</b>	<b>\$ 508,343</b>	<b>\$ 432,760</b>
NET ASSETS	2013	2012
UNRESTRICTED	\$ 976,081	\$ 710,710
UNRESTRICTED – board designated	142,484	119,276
<b>TOTAL NET ASSETS</b>	<b>\$ 1,118,564</b>	<b>829,986</b>
<b>TOTAL LIABILITIES &amp; NET ASSETS</b>	<b>\$ 1,626,907</b>	<b>\$ 1,262,746</b>



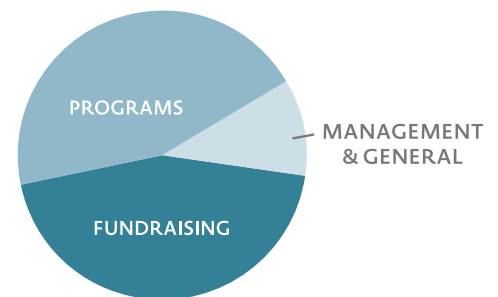
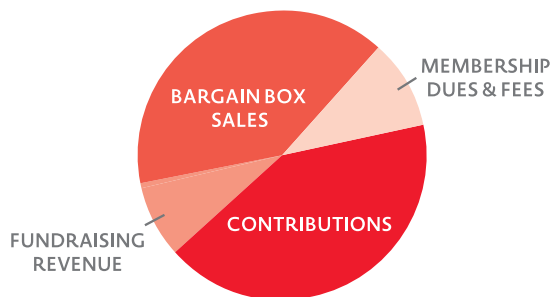
## Revenue Sources

## Expenses

2013



2012



# Mission Milestones

- Advanced our Mission with a membership of approximately 1,000, of which over 350 were active members
- Welcomed 73 new members to active status
- Celebrated 70 sustainer emeritus members
- Established a Community Advisory Board of seven trusted advisors
- Celebrated our League's 85th anniversary
- Recorded sales of over \$400,000 at the Bargain Box
- Hosted three major fundraisers – 3<sup>rd</sup> annual Touch A Truck event, 3<sup>rd</sup> annual Women's Leadership Summit and 3<sup>rd</sup> Junior League ShowHouse
- Held two Task Force meetings, the first to select a school (Cone Elementary) for our community impact initiative and the second to select community programs to bring to the school in 2013-2014
- Placed approximately 100 volunteers into the community and funded 12 community programs and grants with \$75,000
- Provided leadership training through five Women to Watch programs and the Women's Leadership Summit
- Adopted a new three-year strategic plan

*With Gratitude to our 2012-2013 individual contributors\**

- |   |   |   |  |   |
|---|---|---|--|---|
| Active Membership, in honor of Sustainers Emeritus  | Rachel Cohen                              | Ginger & Haynes Griffin/Griffin Family Foundation | Hillary McAlhany                         | Brittany Semones  |
| Jada Anderson                                       | Crystal Collman                           | Kay and Chip Hagan                                | Bonnie & Dan McAlister                   | Patricia A. Sevier  |
| Lisa Ann Anderson                                   | Barbara Cone                              | Jennefer Gullledge                                | Kelly McKee                              | J. Sigmon   |
| Meredith Andrews                                    | Bob and Sally Cone                        | Leslie & Len Conway                               | Amanda McLaughlin                        | Beth Skains   |
| Michelle Arnold                                     | Jean Copeland                             | Christon Halkiotis                                | Aaron & Cameron Messick                  | Anna H. Smith, in honor of Megan G. Lavinder (daughter of Amber Lavinder) |
| Kirt Austin   | Julie & Brooks Copeland                   | Russell & Barbara Hall                            | Ashley L. Miller                         | Carol & Greg Smith  |
| Tara Ayers  | Julie Copeland, in honor of Lisa Anderson | Susanne Hall                                      | Carrie M. Miller                         | Pam & John Smith  |
| Liz Ballard   | Kevin & Sara Corcoran                     | Mary Margaret Hart                                | Tom & Cotten Moring                      | Jamie Smothers  |
| Henrietta Barber                                    | Mike & Jean Cornwell                      | Stephen & Pamela Hassenfelt                       | Jennifer Morrow                          | Allison Speckhard   |
| Mr. & Mrs. James B. Barber                          | Kara & Stephen Cox                        | Rob & Daniela Helms                               | Kacey Myers                              | Pamela Sprinkle   |
| Nan Bayersdorf/Nanco Travel Services, LLC           | Betsy Craft                               | Laura Hockman                                     | Heather Neal                             | Lara Stamey   |
| Chris Beaman  | Tiffany Crenshaw/Intellect Resources      | Morgan & Jack Horner                              | Martha & Fred Newton                     | Sue & Fred Starr  |
| Virginia Beard                                      | Sara D'Ambrosio                           | Alicia Hughes                                     | Laura Norman                             | Ashley & Mike Staton  |
| Beth Bell   | Caroline D'Englere                        | Carrie Hughes                                     | Brittany L. North                        | Deborah W. Staton   |
| Judith Bell   | Jeri K. D'Lugin JD, CLU®, AEP             | Anne D. Hummel                                    | Pat & Vic Nussbaum Fund                  | Boo & Mark Stauffer   |
| Mary Katherine Bell                                 | Susan & Charlie Davis                     | Nancy Parks Hunter                                | Sharon Nussbaum/Aubrey Home              | Pam & Dennis Stearns  |
| Margaret and Bill Benjamin                          | Patrice Dawson                            | John & Aggie Ingold                               | Tiffany O'dell                           | Erin Allison Stedman  |
| Ashley Bennett                                      | Cara & Peter Derounian                    | Kara Jacobs                                       | Heather Oakley                           | Kay Stern   |
| Jonathan & Ashley Bethel                            | Mitchell & Miriam DiMond                  | Robyn & Maurice Jenkins                           | Betsy Oakley, in honor of Heather Oakley | Carrie Stewart  |
| Angela Bighinatti                                   | Sarah Doggett                             | Lisa Johnson and Company                          | Ivy Oakley                               | Ruth Stickley   |
| Stephanie & Patrick Billings                        | Lindsay Donohue                           | Afi Johnson-Parris                                | Cynthia Patterson                        | Susan Storrs  |
| Mollie Boaz   | Allison Leigh Doughty                     | Lisa Johnson-Tonkins                              | Melissa Patterson                        | Elizabeth Stroupe   |
| Jennifer Bogacki                                    | Michele Driver                            | Emily H. Johnston                                 | Martha & Brad Peete                      | Ginger & Alan Sutton, in memory of Lucy Neal Harrell                      |
| Bob & Vicky Borden                                  | Jamie Dufraim                             | Ashley Jones                                      | Lynn Peraldo                             | Carley Swaim  |
| Patsy Boren   | Cathy & Lowell Easter                     | Caroline & Duncan Jones                           | Angela Perkins                           | Ronda Szymanski   |
| Gail Boulton  | Cynthia Edwards                           | Cherise Jones                                     | Sabra & Chip Permar                      | Mrs. Helen & Sarah Tasios   |
| Mrs. V.W. Brabham III                               | Jamal & Paulette Evans                    | Merrill Keeley                                    | Susan Petty                              | Priscilla Taylor  |
| Robin Bradford                                      | Lindsey Evans                             | Katherine A. Kelly                                | Betty K. Phipps                          | Adam & Lauren Tilley  |
| Miriam Bradley                                      | Paulette Evans                            | Amy & Matt Ketterman/Got You Floored, Inc.        | Jennifer Pitts                           | Kendall Tomalas   |
| Louise & Jim Brady                                  | Carrie Everhart                           | Marian & Jim King                                 | Elizabeth Preyer                         | David Trump   |
| Nancy Breener                                       | Caroline Faison/Caroline Faison Antiques  | Camille Kluttz-Leach                              | Sarah Purcell                            | Jennifer Reavis   |
| Mrs. Louise Maultsby Bristol                        | Abby Farris                               | Bill & Susan Kopald                               | Julie Fenton Pyrtle                      | Lori Redding  |
| Robin Brittain                                      | Gayle Faucette                            | Asheley & Marty Kotis                             | Jennifer Reavis                          | Katie Redhead   |
| Deborah Brown                                       | Emily & James Faucher                     | Margaret Kreger                                   | Lori Redding                             | Kathryn T. Remmey   |
| Jennifer Brown                                      | JoBirta Feroe                             | Anne & Sriyesh Krishnan                           | Kathryn T. Remmey                        | Garson & Catherine Rice   |
| Mary Bryan  | Pamela S. Finn                            | Renee Kuzma                                       | Garson & Catherine Rice                  | Pam Ring  |
| Stan & Leigh Anne Bullin                            | Evelyn & Jim Fisher                       | Sheresa Lacey                                     | Pam Ring                                 | Megan Ritenour  |
| William N. & Lisa L. Bullock                        | Mary S. Fisher                            | Megan LeFavre                                     | Megan Ritenour                           | Kierson Robinson  |
| Paige & Michael Butler/Butler CPA, P.A.             | Dr. Tiffany M. Franks                     | Phyllis & Rick Lancaster                          | Jennifer Reavis                          | Jenna Roby  |
| Cherry Callahan                                     | Elizabeth Freeze                          | Betsy Lane  | Lori Redding                             | Vanessa Rodulfo   |
| Kate Cannon   | Gunnar Fromen                             | Julie Lea   | Katie Redhead                            | Kay Rule  |
| Catherine Carlock                                   | Nancy S. Fuller                           | Dr. & Mrs. J. Gary Lee                            | Kathryn T. Remmey                        | Arthur & Emilie Samet   |
| Susan & Sally Cartwright, in honor of Emily Faucher | Shawn & Laura Gallimore                   | Kristina Lemene                                   | Garson & Catherine Rice                  | Robyn N. Sanders, MD  |
| Lisa Carwile  | Ed & Georgette Galloway                   | Barbara Lindley                                   | Pam Ring                                 | Jennifer & David Sar  |
| Laura Cashwell                                      | Lauren Garber                             | Heidi Little                                      | Megan Ritenour                           | Nicole R. Scallon   |
| Kay Chesnutt  | Wendy Gatlin                              | Carolyn Liu                                       | Jennifer Reavis                          | Anita Schenck   |
| Ruth Choiniere                                      | Jane Gibson                               | Amanda Lunnen                                     | Lori Redding                             | Madeleine Schiffman   |
| Mrs. Blake Clark                                    | Jane Gibson                               | Samantha Magill                                   | Katie Redhead                            | Rebecca & Michael Schlosser   |
| Tonya and Sanders Cockman                           | Ida Glasgow                               | Carley & Brian Mann                               | Kathryn T. Remmey                        | Susan & Jerry Schwartz  |
|   | Steven G. Gollehon, DDS, MD, FACS         | Alejandra Marquez                                 | Garson & Catherine Rice                  | Meredith & J. Scott   |
|   | Gillian Goodman                           | Lauren T. Marshall                                | Pam Ring                                 | Mrs. John Guerard Scott   |
|   | Joseph & Carolyn Gorga                    | Kim Martin  | Megan Ritenour                           | Carl & Leigh Seager   |
|   |   | Nancy R. May                                      | Kierson Robinson                         |   |
|   |   | Keith & Kacy McAdoo                               | Jenna Roby                               |   |
|   |   |   | Vanessa Rodulfo                          |   |
|   |   |   | Kay Rule                                 |   |
|   |   |   | Arthur & Emilie Samet                    |   |
|   |   |   | Robyn N. Sanders, MD                     |   |
|   |   |   | Jennifer & David Sar                     |   |
|   |   |   | Nicole R. Scallon                        |   |
|   |   |   | Anita Schenck                            |   |
|   |   |   | Madeleine Schiffman                      |   |
|   |   |   | Rebecca & Michael Schlosser              |   |
|   |   |   | Susan & Jerry Schwartz                   |   |
|   |   |   | Meredith & J. Scott                      |   |
|   |   |   | Mrs. John Guerard Scott                  |   |
|   |   |   | Carl & Leigh Seager                      |   |

*With Gratitude to our 2012-2013 corporate contributors\**

- |                                |                       |                                       |                                       |                        |
|--------------------------------|-----------------------|---------------------------------------|---------------------------------------|------------------------|
| BB&T                           | Century Furniture     | Preferred ChildCare                   | The Fresh Market                      | Well-Spring Retirement |
| Be Creative                    | Charles Aris, Inc.    | Quaintance- Weaver                    | The Red Collection                    | Community              |
| Belk                           | Cold Stone Creamery   | Restaurants & Hotels                  | Tyler Redhead & McAlister Real Estate | Wells Fargo            |
| Belvedere Properties, LLC      | Coley Company         | Sedgefield Country Club - A McConnell | TWG                                   | Whole Foods            |
| Benson, Brown & Faucher        | Colonial Materials    | Golf Property                         | VF Corporation                        |                        |
| Bryan School of Business, UNCC | Greensboro Day School | Snider Fleet Solutions                | Volvo Group North America             |                        |
| Carolina Bank                  | Lucky Pet Resort      | Swoozie's                             |                                       |                        |
|                                | NewBridge Bank        |                                       |                                       |                        |

\*Every effort was made to ensure the accuracy of this information. Any errors or omissions were not intentional. Should you notice an error in the information listed, we ask that you notify us at (336)852-5542.



*Life in the League*





Ashley and Shelia Bennett



U.S. Senator Kay Hagan and  
Carrie Hagan Stewart



Emily Moring Buckland,  
JLG Sustainer Past President  
Cotten Moring and Ashley Moring Voss

# *Like Mother, Like Daughter*

Shared membership in The Junior League of Greensboro has been a cherished tradition for generations. A number of daughters currently are following in their mothers' footsteps to serve our community through the League.



Megan Callahan Christenbury  
and JLG Past President  
Dr. Cherry Callahan



JLG Past President Judy Wicker  
and Elizabeth Wicker



Barbara and Susanne Hall



## When you're this involved in your community, maybe it's time for a community bank.

For over 17 years, Carolina Bank has been proud to be a part of the Piedmont Triad community. Offering that "know-your-name" service that only a local bank can deliver, our employees feel loyal to every customer. It's just one reason why we're the smart choice in banking. Visit us in person or online today.



# CAROLINA BANK

*The Smart Choice in Banking™*

[www.carolinabank.com](http://www.carolinabank.com)

We're Ready To Serve You In  
Greensboro, High Point, Burlington,  
Asheboro, and Winston-Salem.

**(336) 288-1898**



Member FDIC



THE JUNIOR LEAGUE  
OF GREENSBORO, NC, INC.

3101 West Friendly Avenue  
Greensboro, NC 27408

RETURN SERVICE REQUESTED

NONPROFIT ORG.  
U.S. POSTAGE

*Paid*

GREENSBORO, NC  
PERMIT NO. 90



PROUDLY SUPPORTS THE MISSION OF  
**THE JUNIOR LEAGUE**  
OF GREENSBORO

*Visit your local neighborhood markets*

3712 Lawndale Dr • 1560 Highwoods Blvd

Mon-Fri 8am - 9pm • Sat 9am - 9pm • Sun 10am - 8pm



Visit us online at [www.thefreshmarket.com](http://www.thefreshmarket.com)

