

Spring 2017

# evergreene | JLG

The Junior League of Greensboro, North Carolina, Inc.



## Building A Foundation

### Inside This Issue:

AGING IS AMAZING .....	10	90 YEARS OF JLG TIMELINE .....	18
BARGAIN BOX'S NEW HOME .....	12	2015-16 ANNUAL REPORT .....	34



**FIRST BANK**

# Thoughtful Partnerships

**At First Bank, we understand that strong partnerships are key.**

And we're honored to join forces with incredible organizations like the Junior League of Greensboro to address the community's needs and empower the individuals who live there.

**Our services include:**

- » CHECKING & SAVINGS ACCOUNTS
- » LENDING
- » INSURANCE
- » MORTGAGES
- » WEALTH & TRUST
- » DEBIT & CREDIT CARD WITH REWARDS

To learn more visit

**LOCALFIRSTBANK.COM**

Equal Housing Lender. Member FDIC. Securities and insurance products are offered through INFINEX INVESTMENTS INC., Member FINRA/SIPC. INFINEX INVESTMENTS INC. and FB Wealth Management, a division of First Bank, are affiliated entities. We do not provide tax advice. Consult your tax advisor. Investment and Insurance Products are:

Not FDIC Insured	Not Bank Guaranteed	May Lose Value
Not Guaranteed by any Government Agency		Not a Bank Deposit



**Women's Leadership Summit ..... 26**

Glennon Doyle Melton, Together Rising founder, shines at the Seventh Annual Summit



**Bargain Box**

**12**

The Bargain Box's move to Midtown makes our longest running fundraiser more accessible.



**Cone Elementary ..... 8**

As our Cone partnership comes to a close, members reflect on their experiences.



**Trucking Along Into Year 7 of Touch of Truck! ..... 24**

"Honk Honk, Beep Beep!" Children and families enjoy the trucks and activities during this exciting annual event.

**ADVERTISERS' INDEX**

- Annual Fund ...39
- AARP ...11
- Bargain Box ...15
- Breakthrough Besties ...27
- Carley Mann and Associates ...11
- First Bank ...2
- Friendly Dentistry ...7
- Guilford Child Development ...23
- Jeanne Bladsell ...39
- Michelle Mottinger, DDS, PA ...17
- 90th Anniversary ...40
- Polliwogs ...4
- Stearns Financial Group ...4
- Steele and Vaughn ...25
- UNC-Greensboro's Bryan School of Business and Economics ...39
- Worth New York - Ashley E. Staton ...39

Dear Reader .....	5	Touch A Truck .....	24
President's Message .....	6	LeBauer Park Reading Room .....	25
Leaving Our Mark at Cone .....	8	Leadership Development .....	26
Aging Is Amazing .....	10	Partners in Development .....	28
A New Home for the Bargain Box .....	12	Meet the JLG Board .....	30
Sustainer Co-Presidents Message .....	14	JLG Awards .....	32
JLG 2016 Sustainer Memories .....	16	2015-16 Annual Report .....	34
JLG History Timeline .....	18	Crafting Connections .....	36
Getting Engaged with the JLG .....	21	JLG Advisory Board .....	37
2016-2017 JLG Provisionals .....	22	Thank You to Our Sponsors .....	38



The Junior League of Greensboro,  
North Carolina, Inc.

3101 West Friendly Avenue  
Greensboro, NC 27408

TEL: 336-852-JLG2 (5542)  
FAX: 336-852-5401  
juniorleagueofgreensboro.org

Editor  
Heidi Little

Assistant Editor  
Heather Neal

Advertising  
Angela Ben-Zekry  
Patricia L. Huerta

Photographer  
Kisha Carmichael-  
Motley

Contributing Writers  
Lauren E. Davidson  
Teresa Marie Russell  
Kelly McKee

Communications Chair  
Frances F. Rodenbough

Design  
Peg Hall Williams

2016-2017 Junior League Board of Directors

President  
Carley Swaim

President-Elect  
Kelly McKee

Community  
Vice President  
Brittany Midyette

Finance Vice President  
Erin Justad

Personnel  
Vice President  
Peg Hall Williams

Corresponding  
Secretary  
Susie Boles

Recording Secretary  
Teresa Marie Russell

Member At Large  
Vanessa Rodulfo

Member At Large  
Maggie Wisco

Bargain Box Chair  
Sarah Hilty

Communications Chair  
Frances F. Rodenbough

Community Programs  
Chair  
Lauren Marshall

Diversity & Inclusion  
Chair  
Samantha Magill

Donor Development  
Chair  
Mary Lesa Pegg

External Planning  
Chair  
Erin Kennedy

Leadership  
Development Chair  
Julia Cox

Marketing & Public  
Relations Chair  
Alex Pappas

Meeting Arrangements  
Chair  
Heather Hankins

Membership Chair  
Brittany Semones

Nominating Chair  
Laura Cashwell

Placement Chair  
Shawna Tillery

Public Affairs Chair  
Elizabeth Freeze

Special Events Chair  
Jenilee Fleetwood

Sustainer Co-President  
Georgette Galloway

Sustainer Co-President  
Vicki Vaughan

Treasurer  
Megan Craven

FOLLOW US @JLGREENSBORO



336.275.1555  
1724 Battleground Ave. Ste 104  
Greensboro, NC 27408  
PHOTO AS SEEN IN THE SCOUT GUIDE.

COMFORT IN PLANNING

**sfg**  
**STEARNS**  
FINANCIAL GROUP

**FINANCIAL FOCUS**  
for WOMEN

[www.StearnsFinancial.com](http://www.StearnsFinancial.com)  
800.881.7374

**GREENSBORO OFFICE**  
324 W. Wendover Avenue, Suite 204  
Greensboro, NC 27408  
336.230.1811

**TRIANGLE OFFICE**  
1450 Raleigh Road, Suite 105  
Chapel Hill, NC 27517  
919.636.3634

**NAPFA**  
THE NATIONAL ASSOCIATION OF  
PERSONAL FINANCIAL ADVISORS

Fee **FO** Only

# DEAR READER

As the daughter of a General Contractor, I have many fond memories visiting him on construction sites. At a young age, I thought that surveying the lot, moving dirt, and pouring the concrete footings seemed to be the most time-consuming process—and all just to prep for the foundation. Needless to say, I learned quickly that the foundation is vital to a solid structure. Without a foundation, the framed walls could not stand up.

For a moment, let's reflect on the word "foundation." What comes to mind? Perhaps you visualize the large cornerstone of a historic building. You might think about an organization devoted to funding charities. Maybe you focus on the underground strength and depth of a foundation. Or possibly you consider the underlying principles of a specific subject. Regardless of how we each define foundation, it absolutely stirs thoughts within us.

As our current theme emphasizes, the Junior League of Greensboro continues to build strong foundations in our community. Our Mission defines it. Our legacy proves it. Our membership promotes it. In fact, the JLG has been building foundations for nine decades. We have built "brick and mortar" foundations. We have funded programs to strengthen the educational foundations for children. We have encouraged

**"I can do things you cannot, you can do things I cannot; together we can do great things."**

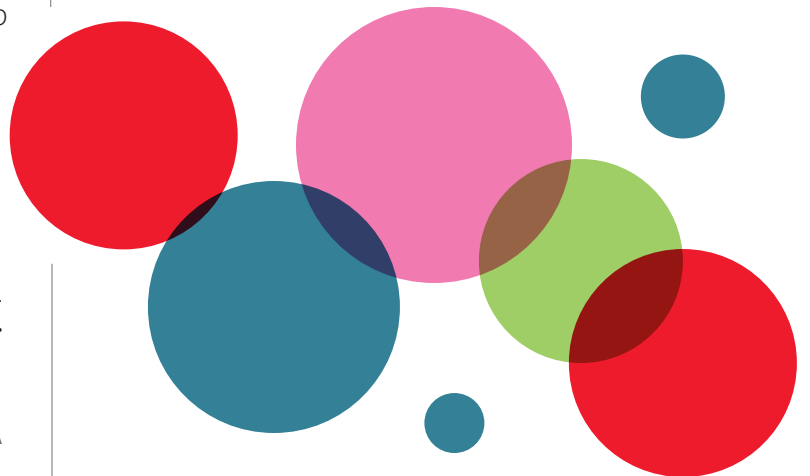
- MOTHER TERESA

women to become leaders. Indeed, we have created lasting community impact.

In this edition of the EverGreene, we will highlight many of the League's programs and partnerships. This year, we have moved the location of the Bargain Box. We finish our four-year partnership with Cone Elementary and are moving to a new issue: aging. We welcome a new class of Provisionals for a year of volunteer training and leadership. We celebrate Touch a Truck's success and look forward to an exciting Women's Leadership Summit in April. Within these pages, you will notice that while our support structure has transformed over these past decades, the JLG continues to uphold its original vision.



Heidi Little  
2016-2017 EverGreene Editor





Carley Swaim  
President, 2016-17

# PRESIDENT'S MESSAGE

“As you discover what strength you can draw from your community in this world from which it stands apart, look outward as well as inward. Build bridges instead of walls.”

- SUPREME COURT JUSTICE SONIA SOTOMAYOR

I can attribute a good portion of my passion for our community, my strength to overcome life's obstacles, and my understanding of the art of building bridges to my nine-year tenure in the Junior League of Greensboro. As a Greensboro native, I have always had an overwhelming pride in our community, but the League allowed me to hone in on how to serve with purpose and understanding, how to empower others to serve, and how to be a woman leader building a better community. The Junior League has allowed me to build a personal bridge connecting my passion to serve and my love for people. I will forever be grateful for my years of experience with the League and for this past year having the absolute honor and privilege to serve as the President of such an incredible organization.

## Building

Along this journey, I witnessed many examples of building. The building of lifelong friendships, strong leaders, community programs, funding opportunities, and overall lasting impact. The 2016-17 year shows us many building and growth opportunities with such projects as Touch a Truck, the Women's Leadership Summit, and Women to Watch (W2W). Our

longest standing number one fundraiser for 69 years and counting, the Bargain Box, moved into its new Midtown location at 1410 Mill Street; all shoppers and donors are encouraged to come visit and get a feel for the new BB as “the” boutique thrift shop in town. In addition, the League was honored to gift LeBauer Park the Junior League Reading Room. Because of this generous gift, the arts and culture of downtown Greensboro will continue to thrive and be accessible to everyone.

## JLG Strong

Since 1926, we have been strong community catalysts funding projects and programs, training and empowering volunteer leaders to work throughout the community, and offering opportunities to all to engage in service, fundraising, and fun. The JLG will always help the community grow and prosper as we tackle issues that are considered the greatest unmet needs. We are embarking on issue-wide research as we introduce community programming in 2017 around our new community impact issue: aging. We will leave our legacy at Cone Elementary after a four-year partnership working with the students, teachers, and families. We are JLG Strong!



## 90 Years of Women Building Better Communities

As we embark on our 90th Anniversary of Women Building Better Communities, the JLG stands strong as a resource in the Greensboro community. We have grown in membership and impact each year and continue to have amazing stories of our JLG work. Those incredible stories span decades with diverse voices, varying strategies, and different projects with one common denominator: strong-willed women leaders eager to make an impact in their community.



Our history is rich and our Mission possible because of our supporters over the years. We are appreciative of our great partnerships with individuals, companies, and organizations throughout the community that are integral to the success of our work.

We want all to celebrate in our incredible history and our promising future through great stories, futuristic strategic planning, and capacity building as we build upon JLG's foundation for another 90 years!

**CARLEY SWAIM**  
PRESIDENT

# MAKING A DIFFERENCE IN THE WORLD ONE SMILE AT A TIME

Friendly Dentistry has a dental philosophy that is simple: allowing each patient to be well-informed, educated, and able to make his or her own dental choices. We are friendly, compassionate and painless.

Our team of experienced Greensboro dentists is determined to make a difference in the world, one smile at a time.

### Teeth Whitening for New Patients!

When you become a new patient at Friendly Dentistry, you get a free teeth whitening kit at your first complete check-up with x-rays and a cleaning!



 **FRIENDLY DENTISTRY**<sup>®</sup>  
FROM OUR SMILE TO YOURS

GUY RIBANDO, D.D.S.

BRITTANY SEMONES, D.D.S.

MARK WILKINSON, D.D.S.



336.272.4595

[www.greensboro-dentist.com](http://www.greensboro-dentist.com)



# LEAVING OUR MARK AT CONE ELEMENTARY

By Heidi Little

In 2011-12, the Community Impact Coordinators of the Junior League of Greensboro (JLG), Cherise Jones and Laura Cashwell, were charged with researching the concept of an issue-based community program. At the March 2012 General Membership Meeting (GMM), 91% voted in favor of pursuing this concept, which was to shift from the project-based approach to community programming. Immediately after this meeting, a committee was formed to diligently research issues.

At the May 2012 GMM, the JLG members selected "Education." Quoting Jones afterwards, "We [the JLG] are looking forward to developing a measurable community programming that supports

educational progress, is sustainable, and provides a vehicle for achieving our mission. Many opportunities await us!"

Next, the priority shifted to researching 30 Title I Elementary Schools in the Greater Greensboro area. During 2012-13, Jones was the External Planning Chair. She and the expanded Task Force narrowed the list of schools to four and finally selected Ceasar Cone Elementary School. Chris Weikart, Principal of Cone Elementary, said, "My initial reaction was a humble excitement. There were so many schools which would have benefited from the JLG partnership. When we were selected, I felt like we had won the lottery, but did not want seem boastful about it."



For nearly five years, the Junior League of Greensboro has been dedicated to Cone Elementary. What a true partnership the JLG has shared with the entire school community! The focus areas have been Parent Involvement, Basic Needs, Literacy/Learning, and Teacher Support. All of the programming has been designed to have lasting impact.

When asked to describe the positive changes, Weikart says, “The most significant change was the impact on our school climate and attitude. Prior to the JLG, I am unsure if our school community truly believed that positive change was a certainty. However, the JLG members joined our school community by providing educational programs, lunch buddies, work-days to improve the facility, and field trips. Their support helped meet the basic needs of Cone families and they showed love to

the Cone faculty and staff.”

By concentrating our support at one school, the JLG hoped to make a significant and lasting difference in the educational progress of the Cone students. Weikart is pleased to say, “The school did see a 10 percentage point increase over the course of the three years on End of Grade testing, as well as a 50% reduction in out-of-school suspension.”

During the first year at Cone, Kierson Robinson served as the Kids in the Kitchen chair. In the classroom, Robinson and the committee would emphasize the importance of making nutritious food choices.

She fondly remembers that the “children would identify me as the fruit and vegetable lady. I smiled inside when a kid would light up

when they approached me to ask if I was coming to their class to talk about good food again.”

Megan LeFaivre was the Community Vice President from 2015-16. She proudly stated, “Our work with Out of the Garden Project and BackPack Beginnings had a huge impact on the Cone Community. These partnerships didn't exist before we came, and now the school is set up with invaluable partnerships to help the kids and families have extra food on the weekends.”

While the “official” partnership between Cone Elementary and the Junior League of Greensboro will be coming to an end, LeFaivre hopes “the JLG community continues to hold Cone close to their hearts to keep an unofficial partnership alive. As a lunch buddy, a classroom volunteer, or just an anonymous donor, I hope [the JLG] continues to support OUR school for years to come.”

## CONE by the numbers...





# AGING IS AMAZING

By Heather Neal

After four successful years focusing on education and supporting Cone Elementary, the Junior League of Greensboro (JLG) is looking ahead to its next area of community impact: aging. Beginning in 2017, the League will be focusing its volunteer efforts and fundraising to make a difference in the aging population of Guilford County.

Utilizing the community

impact model allows the League's time, treasure, and talent to be focused on a singular issue, impacting communities beyond the immediate sphere of interest of the membership.

After researching several potential areas of impact, the membership voted to focus the next few years on aging. Often overlooked, the elderly population faces many challenges, including isolation, disability,

depression, illness, poverty, and hunger. The League endeavors to support seniors in these areas as well as help support caregivers of the elderly, who face many challenges of their own. Ninety percent of adults over age 65 rely solely on Social Security for income and 20% have two or more disabilities. In addition, over 16,000 seniors in Guilford County face food insecurity on a daily basis.

Over a thousand of these older adults are also caregivers to grandchildren, and more than 20% of those grandparents have disabilities themselves. The Junior League of Greensboro strives to provide aid and support to these vital members of our





community.

JLG  
Community  
Vice  
President  
Brittany  
Midyette  
states, "I am  
delighted  
that the JLG  
will begin  
focusing  
on aging in  
the 2017-18  
League year.



This is an  
opportunity  
for our  
League  
to leave  
a legacy  
within our  
community.  
Whether it  
be spending  
time with an  
aging adult,  
appreciating  
a nursing  
home  
staff, or  
encouraging  
a caregiver,  
the  
possibilities  
are endless  
as to the  
impact we  
can have in  
our city of  
Greensboro."





buy • sell • invest

## Carley Mann & Associates

---

Carley Mann

Realtor/Broker  
336.337.5672  
carleymann@gmail.com  
www.carleymann.com



Let Our Team Work For You!



## Missing something?



Be among the first to learn about  
AARP events in the Triad  
by signing up for email today

[www.aarp.org/Yes2EmailNC](http://www.aarp.org/Yes2EmailNC)



Real Possibilities



# A NEW HOME FOR THE BARGAIN BOX

By Lauren Davidson

The Bargain Box's relocation to Midtown at 1410 Mill Street, Greensboro, was a calculated move to benefit the Junior League of Greensboro's (JLG) most successful fundraiser. "The move was very strategic," said JLG President Carley Swaim. "We looked for up-and-coming areas, and Midtown is very much up-and-coming, so that's where we landed." The new location provides much greater accessibility, which was at the top of the list of needs for the committee. The Bargain Box is now on the list of bus routes for customers' convenience. It also provides more parking than the previous Elm Street location and includes the addition of bathrooms.

"I'm happier to be there," said Sarah Hilty, Bargain Box Chair. "It feels light and airy." Hilty is pleased with the chosen location. "The Midtown location allows us to keep our regular customers while also making new ones."

The new space also impacts the Bargain Box's inventory, a change that excites the Bargain Box committee. "We're trying to be more selective because of the smaller space," said Hilty. "We no longer take furniture, books or linens. We've also stopped taking t-shirts (unless they are designer), undergarments, and incomplete sets of housewares." The new store has more of a boutique feel versus a thrift store feel, and yet maintains bargain prices.

Inventory changes were just as strategic as the move itself. "We want our members to shop more," said Hilty.

There is a new pricing system complete with barcode scanning. "We're trying to make pricing easier for our members to contribute and price things at night marking," said Hilty. This means there are a lot of tasks that still need to be accomplished. "A lot of stuff is still

in transition,” said Hilty. She urged volunteers to stop by even if they only have an hour to spare. Because of the halt in donations during the move, the Bargain Box has more items to sort through. Along with the retagging of the entire store, the Bargain Box committee and staff has had their hands full.

Thanks to the tireless JLG volunteers, the move has been a successful one. “When we needed their help, our members came,” said Hilty with pride. Katie Auten, head of the Transition Team, agreed: “The spark of this move was our membership. We heard everyone’s ideas and comments about wanting something new and improved. We must all take ownership of the Bargain Box, as we all benefit from the fruit of its existence. This is what we created and built to help our League grow and to provide for our community.”

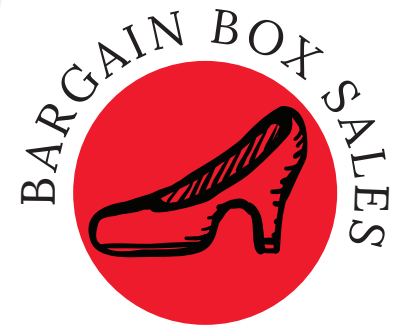
This isn’t the first time the Bargain Box has moved. The Bargain Box used to be located at 214 S. Greene Street, where it served as the headquarters for the League in the 1950s. When it burned down on October 20, 1961, the Bargain Box relocated downtown. Later it moved to 122 N. Elm Street, where it was located until 2016.

The move to Midtown will certainly help the Junior League of Greensboro widen its reach for customers, engage more members to shop, and maintain the wonderful reputation that the Bargain Box has in the Greensboro community.

Follow the Bargain Box on social media to learn about special events!



2015 - 16 FUNDRAISING



\$72,714



\$47,892



\$21,500



\$12,655



# NOTES FROM THE SUSTAINER CO-PRESIDENTS



Georgette Galloway  
2016-17 Sustainer  
Co-President



Vicki Vaughan  
2016-17 Sustainer Co-  
President

Welcome to the Sustainer year of 2016-17. To the Sustainer members, a heartfelt thank you for your continued support, dedication, and service. This year, we have had the privilege of working with a most outstanding group of women who energetically continue to promote voluntarism in our community.

The year kicked off on Monday, August 22, 2016, with the Active and Sustainer Bargain Box Opening Party, a joint celebration with the Actives celebrating the opening of our new Bargain Box located at 1410 Mill Street. The new store is beautifully designed with a pleasant atmosphere, and it is conveniently

located with lots of great parking. The Sustainers donated a new TV for the new Bargain Box that will continually stream Junior League news so shoppers will be aware of our strong presence in the community. It is a good way to advertise our upcoming community events.

On Thursday, September 22, 2016, the Fall Cocktail Party at the Greenway Villas at Well-Spring on Verbena Drive was co-chaired by Leslie Conway and Ashley Staton. Committee members included Phyllis Lancaster, Marian King, Mary Claire Thomas, and Stephanie Billings. The party was hosted by Jean and Ralph Davison, Bonnie and Dan McAlister, and Pam and David Sprinkle, and it was sponsored by Well-Spring Retirement Community. The outdoor event was moved inside to the Rotunda due to the weather, but that did not put a damper on the evening. It was a lovely, relaxing, well-attended event.

Our Annual Fall Luncheon was held on Wednesday, November 16, 2016, at the Greensboro Country Club. Mary Fisher chaired the event with the help of her committee members, Trisha Edwards, Cotton Moring, Mitzie Weatherly, Lori Durden Wilson, Sharon Allen, Kappie Yates, Mary Ann Gerhard, and Becky Turner. With the theme of Moving Forward, the luncheon featured Julie Luther of PurEnergy who spoke on fitness and nutrition, and how to stay on track in a busy world. What an inspirational speaker! To learn more



about Julie Luther and PurEnergy, please visit her website, [www.julieluther.com](http://www.julieluther.com).

This year we added a brand new Holiday Event on Thursday, December 8, 2016.

It was held at our Junior League Headquarters beautifully decorated by Kelley Rowland, our Executive Assistant. Barbara Hall chaired the holiday gathering with the help of Kris Cooke, Margaret White, and Jada Anderson.

We welcomed the New Year on Thursday, January 19, 2017, with the Annual Well-Spring Wine and Cheese party which was chaired by Leslie Conway. Committee members were Carol Vercaemert and Leslye Tuck. Well-Spring hosts this event year after year, providing delicious food and drink while celebrating the members of our League.

Our Winter Social was held on Thursday, February 16, 2017, and chaired by Melanie Soles who graciously opened her beautiful home to our members. Her committee members included Kirt Austin, Elizabeth Brumeloe, Nancy Edward, Pam Smith, Kara Cox, and Tamara Slaughter.

On Thursday, May 11, 2017, we will finish up the year with our annual Spring Luncheon at the Starmount Forest Country Club. This event wraps up the year's accomplishments and focuses our attention on the upcoming year and what to expect. Pam Ring will chair the event with the help of Linda Lee, Sallie Luedtke, Jane Gibson, Jeri D'Lugin, Julie Cromer, and Rhonda Bentz. Our Sustainer Woman of Distinction Award is presented annually at the Spring Luncheon. The 2015-16 recipient was

**"We don't accomplish anything in this world alone ... and whatever happens is the result of the whole tapestry of one's life and all the weavings of individual threads from one to another that creates something."**

- SANDRA DAY O'CONNOR, JUNIOR LEAGUE OF PHOENIX MEMBER

Jeri D'Lugin.

We cannot begin to express how much we have enjoyed serving as Co-Presidents for the Sustainer Junior League year of 2016-17. This organization is comprised of the most amazing women we have ever had the privilege of working

beside. Every woman in this organization exemplifies the epitome of excellence. As long as we continue to work together, our accomplishments are grand.

**GEORGETTE GALLOWAY & VICKI VAUGHAN**  
SUSTAINER CO-PRESIDENTS



## B A R G A I N B O X

shop. donate. repeat.



*69 Years of Sustainable Fundraising for the Junior League of Greensboro*



1410 Mill Street, Greensboro

**Regular Stores Hours:**  
Mon - Sat: 10 am - 5:30 pm

336-273-6349

[bargainboxofgreensboro.org](http://bargainboxofgreensboro.org)

Join us on facebook or instagram @BBGreensboro



# A YEAR OF SUSTAINER CELEBRATIONS



There is nothing on this earth more to be prized than true friendship.  
THOMAS AQUINAS





MICHELLE H. MOTTINGER, DDS, PA  
FAMILY DENTISTRY



2710 HENRY STREET • SUITE 104  
GREENSBORO, NC 27405  
336.375.1825  
MOTTINGERDDS.COM

JUNIOR LEAGUE SUSTAINER

# 90 YEARS OF WOMEN BUILDING BETTER COMMUNITIES

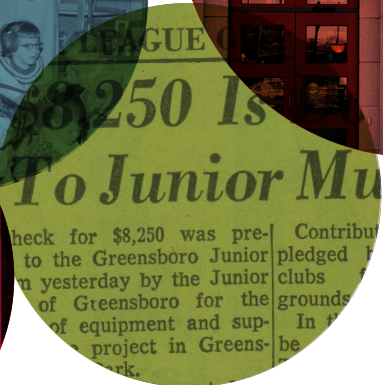
By Teresa Marie Russell

May 26, 1926 - Miss Kathleen Price (later Mrs. Joseph M. Bryan), her nine book club friends, and a selected group of 24 more young women meet in the O. Henry Hotel's Blue Room and organize the Greensboro Charity League. Its purpose was public service to worthy causes and the raising of money for such interests.

1961 - JLG starts the Greensboro Historical Museum.

1941 - 1945 - During World War II, League members are trained in nurses' aid, motor corps, and case aid. One member became the county chairman of the Women's Division of the War Saving staff.

1949 - JLG starts the Cerebral Palsy Training Center (now Gateway Education Center).



Late 1930's - JLG focuses its attention on partnering with schools to perform vision tests on all children in the school system (which was accomplished in five years' time) and special theater performances.

1942 - The first Junior League of Greensboro cookbook is published as a fundraising effort.

1957 - JLG starts the Junior Museum (now Natural Science Center).

1997 - JLG contributes \$75,000 to the opening of the Greensboro Children's Museum.

1980 - An evening of singing and dancing known as the "Follies" is a major fundraiser for the JLG.

1970 - JLG raises money to support the restoration of the historic Blandwood Mansion.



1961 - The Bargain Box, a community landmark since the late 1930's, burns down. This was not the first time the Bargain Box had challenges. The Bargain Box closed during World War II. It reopened its doors in the 1947-48 year and made around \$3,000 for the Junior League. In the 1950's, the Bargain Box became headquarters for the League and was relocated to Greene Street.

1977 - JLG raises over \$40,000 for a project against child abuse.

2005 - With the inaugural Showhouse, the JLG updates and redecorates a historic home as a fundraiser, raising money for three years of community projects.

1991 - JLG partners with the Greensboro Urban Ministry to help provide medication for those unable to pay for it.

## OUR HISTORY (CONT.)

2008 - JLG's new headquarters is located within the historic and beautiful Albright House. The home was originally the residence of the Bryan Family and JLG founder Kathleen Price Bryan.

2010 - JLG hosts first local Touch A Truck. Martha Newton, Special Events Chair 2009-10, says "League members embraced this event from the beginning and the energy and excitement surrounding this fall festival has continued to grow over the past six years."

2013 - JLG selects the Adamsleigh estate for the Designer Showhouse. Carley Mann, Showhouse Co-Chair 2011-13, says, "I am always amazed at what we can accomplish together as Actives, Sustainers, and community partners. The whole ShowHouse experience was astounding - from working with Traditional Home, Adamsleigh at Sedgefield, and some of the best and most sought after designers in the country and Greensboro Plus, we raised enough money to support the league for the following three years."

2017-18 - JLG focuses on Aging, the next community impact area.



2009 - JLG holds the first Women to Watch series. Carley Swaim, 2016-17 President says, "Women to Watch was a program created by the JLG to allow our women leaders to build upon the skills they already possess, introduce them to new skills and attributes they did not know they had, and to empower them to be the best leaders, advocates, and volunteers our community has to offer."

2010 - JLG holds the First Women's Leadership Summit. Julie Copeland, JLG 2013-14 President says, "Our hope is that Women's Leadership Summit attendees leave each year's conference inspired, with renewed energy and excitement, greater confidence, and an increased desire to make a difference—in their professions, as volunteers in the community, and as leaders in their homes."


2013 - JLG moves to issue based volunteering and partners with Cone Elementary. The focus areas are Parent Involvement, Basic Needs, Literacy/Learning, and Teacher Support.

2016 - Bargain Box moves in to Midtown to Mills Street. Katie Auten, Bargain Box Transition Chair 2016-17, says, "In typical JLG fashion, the Bargain Box move was expertly researched, planned, and executed. While a move of this magnitude does not come without its hiccups, our volunteers always rose to the challenge and made sure each decision was what was best for our league."



# GETTING ENGAGED WITH JLG

By Kelly McKee



My only regret as Corporate Relations Chair is that I didn't start earlier. I had never been asked to call on corporate donors in my previous placements, and I had no idea how good it would feel to share the story of the Junior League of Greensboro (JLG) with partners. Last year, I had my first opportunity to make connections with partners and share the long history of the League. This year, I am pleased to liaison to our current Corporate Relations Chair, Mary Lesa Pegg.

Often I hear from businesses, "I know you do good work in the community." The conversation with a potential corporate sponsor always hinges on the community programs of the League. It has been a pleasure to describe our work at Cone Elementary, and this year we are beginning to share the news that our issue of impact will focus on aging.

Our Leadership Development programming is new to some of the prospective partners. Many want to hear more about our mission to develop the potential of women, and they appreciate the benefit of trained leaders for Greensboro.

When we ask for support, the response from our partners has been overwhelming. We filled The Fresh Market parking lot at our recent Touch a Truck with sponsored trucks and activities that kept families engaged all day. At our most recent Women's Leadership Summit, all tables were full, and the ballroom at Grandover Resort was buzzing with the conversation of the many participants who had the pleasure of employer-sponsored leadership training.

Our latest partnership with The Joseph M. Bryan School of Business and Economics at the University of North Carolina at Greensboro developed out of creative conversations about our mutual focus on women leaders. Through this partnership we have improved upon our successful Women to Watch series now hosted by the Bryan School.

By far the best part of a sponsorship conversation is figuring out how a partner fits into our story. For some, it is their presence at our events. For others, it is the satisfaction of seeding our efforts in community programs. As we continue our 90-year legacy in Greensboro, one thing is clear: our story would be incomplete without our partners.

Help us to build a better community!

If you are interested in sponsoring the Junior League of Greensboro's meetings, fundraising events, and programs, contact Mary Lesa Pegg at [mlpegg2@uncg.edu](mailto:mlpegg2@uncg.edu).





# WELCOME PROVISIONAL CLASS OF 2016-2017

By Brittany Semones

As The Junior League of Greensboro (JLG) switched from a half-year to an annual Provisional period, we were thrilled to accept our largest Provisional class in JLG history! We kicked off our League year with a fantastic Super Saturday on August 20, 2016. The day was inspirational, as we heard from many of our amazing members and learned what the League does for the Greensboro community. The Provisional members discovered what a fantastic foundation has already been built by our predecessors, and they were excited to learn how they will build upon that in the future. The JLG proudly welcomes 54 amazing women to our organization!

Interested in joining or learning more about the Junior League?

We'd love to have you join us in our efforts to serve the Greensboro community through our mission of training women to be better leaders and volunteers. The Junior League of Greensboro reaches out to women of all races, religions and national origins who demonstrate an interest in and a commitment to voluntarism. Provisional applications for 2017-18 will be accepted into August 2017. Visit <http://juniorleagueofgreensboro.org/join/> for the online application.



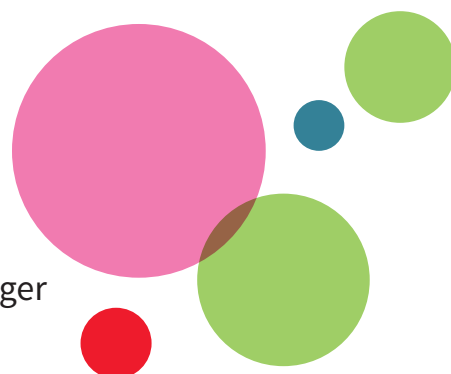
# PROVISIONAL CLASS OF 2016-2017

Lindsey Angell  
Lauren Bauer  
Anne Beckwith  
Jenn Boozer  
Jennifer Carver  
Anna Choiniere  
Brittany Clifton  
Bridget Crocker  
Shawnette Cruz  
CeCe Cummings  
Amanda Donnelly  
Caitlin Fox  
Sherrell Gales  
Pamela Greenwood

Lauren Irvin  
Tammy Lea-Hill  
Chelsea Lee  
Dana Lyles  
Emily Martin  
Kia McLean  
Erin Morgan  
Emilie Mortensen  
Sinead O'Doherty  
Tami Payne  
Haley Price  
Christina Purgason  
Shawnee Robinson  
Brandy Rogers

Jodee Ruppel  
Alexandra Sarrimanolis  
Cristy Scholler  
Chelsea Smith  
Kari Smith  
Nicole Smith  
RJ Srinath  
Tuisha Stack  
Lizzy Tahsuda  
Sophia Tamura  
Coretta Walker  
Elisabeth Ward  
Hannah Weinberger  
Sarah Wellman

Grace Willard  
Ebony Williamson  
Taylor Williamson  
Jenna Willis



## Need help locating QUALITY CHILD CARE?

Our database contains information on

- Child Care Centers • Family Child Care Homes
- Preschool Programs • After School Programs
- Summer Camps

Services en Espanol Disponibles

We can provide information on child care options in the following counties:

High Point

336-887-8224

• Guilford • Rockingham • Randolph

800-289-5098

Greensboro

336-369-5097

• Ashe • Alleghany • Davidson • Davie • Forsyth • Stokes • Surry • Wilkes • Yadkin

800-937-7610

[www.guilfordchilddev.org](http://www.guilfordchilddev.org)



# TOUCH A TRUCK

By Heather Neal

One of the Triad's most popular family events, the Junior League of Greensboro's (JLG) 7th Annual Touch a Truck event rolled into The Fresh Market parking lot on October 9, 2016, for five hours of climbing, exploring, learning, and fun. Following days of rain thanks to Hurricane Matthew, the skies cleared, and the sunshine streamed down brightly just in time for one of the community's favorite events.



Touch a Truck is a unique festival-like experience that allows for hands-on learning for children and their families while serving as one of the Junior League of Greensboro's largest community outreach events and

fundraisers. This year's Touch a Truck brought in approximately 2,000 attendees and a \$25,000 net income to support to support the League's programs and Mission.

The honks, toots, and siren wails could be heard from afar as you approached the parking lot, which had been transformed into a family-fun extravaganza, complete with big rigs, construction equipment, a fire truck, the Colgate dental van, and more. There were bounce houses, a bounce slide, a petting zoo, and even visits from friends like Olaf, Bob the Builder, and Dora the Explorer. A fun addition to the truck lineup this year was the Eco Bus, which seeks to connect the Greensboro community with the outdoors.



The police command center and ATV units were a big hit among kids, as was the Go Time Gaming truck and One Bad Chad monster truck, with its tires towering over most of the kids and adults alike. There was even a mini kid-sized big rig from EPES.

Fabulous aromas filled the air as kids climbed on trucks and vehicles of all shapes and sizes. This year's event also featured food trucks, including the PorterHouse Burger Truck, Taquería El Azteca Taco Truck, Kona Ice, and more. Kids also had the chance to participate in the Kids in the Kitchen Chef's Challenge, see the Greensboro Police Department's K9 unit, and watch the Greensboro Ballet perform.

This year also featured a VIP hour preceding the event, which gave a limited number of ticket-holders a chance to explore the event in a more private setting. Another addition included a "Truck or Treat" theme, where kids could collect a treat from each truck.

"I probably look forward to volunteering at Touch a Truck as much as the kids who attend. Rain or shine the atmosphere is always positive and happy. This year was no exception. I had the honor of working with our characters and the look on the children's faces as they got to meet someone like Dora the Explorer was absolutely priceless," shared JLG volunteer Jennefer Gullede.



# LEBAUER PARK READING ROOM

As we continue “Building a Foundation” together, the Junior League of Greensboro (JLG) is proud to announce its partnership with Greensboro Downtown Parks, Incorporated with a \$15,000 gift to the Carolyn and Maurice LeBauer Park, which opened on August 8, 2016.

This gift provided the League naming rights and sponsorship recognition for the Reading Room at LeBauer Park. The Junior League of Greensboro's Reading Room will extend library events out into the park as well as serve as a pathway from the Greensboro Children's Museum to the park. The Reading Room will feature the Junior League logo on book racks, covers, umbrellas, tables



and chairs as well as on all event schedules.

The Junior League of Greensboro President Carley Swaim states, “The Junior League celebrating ninety years of women building better communities, and then giving back to something that has such an amazing legacy as Carolyn LeBauer, marks a beautiful connection in our community.”

Because of this generous gift, the arts and culture of downtown Greensboro will continue to thrive and be made available to everyone. In turn, this opens up marketing, programming and location venue opportunities for the League in the future.

## Thank You Sponsors

Special thanks to our Touch A Truck Cherry Picker-Level Sponsors:

- Best Logistics
- Epes Transport
- Greensboro Day School
- Greensboro Pediatric Dentists
- Old Dominion Freight Line, Inc.
- Ribando and Semones, D.D.S., P.A.
- Terminix Company
- Triad Dentistry
- United Healthcare
- Volvo

**Steele & Vaughn**  
Since 1934  
Moving and Storage

North Carolina MOVERS Association, Inc.

BBB ACCREDITED BUSINESS

# SEVENTH WOMEN'S LEADERSHIP SUMMIT

By Julia Cox



2017 marks the seventh year of the Junior League's Women's Leadership Summit. The Leadership Development Committee organizes the day-long conference of women, for women, by women.



As in years past, JLG members and sustainers, professionals, entrepreneurs, and mothers gather for a day-long leadership and professional development experience.

Throughout the day Summit attendees take part in breakout sessions. This year's breakout speakers were selected based on feedback from JLG membership. The list of speakers includes communication experts, published authors, respected academics, and local celebrities such as:

- Emotional Intelligence professional and provisional JLG member, Nicole Smith
- Coach, speaker, and author, Cherri Walston
- Body image expert and licensed counselor, Dr. Maria Paredes
- Dance professional and reality television celebrity, Whitney Way Thore

Each year the Summit presents a keynote address. This year's address will be a conversation with #1 New York Times Bestseller author, Glennon Doyle Melton. Past

headline speakers have included Nancy Lublin (2011), Jennifer Thompson (2012), Dr. Aldona Wos (2013), Jenna Bush Hager (2014), Bonnie St. John (2015), and Jennifer Pharr Davis (2016).

After attending the Summit women report:

- Positive networking opportunities with local leaders and peers to discover strategies for solving today's business challenges
- Exposure to quality content allowing them to perform their job more effectively and reach key learning objectives
- Immediately applicable knowledge and skills to enhance their current projects and performance
- Inspiration to take the tools they have gained and share them with their team

The Summit is a major fundraiser for the Junior League of Greensboro, with all proceeds from the event supporting the League's mission of improving the community through the action of trained volunteers and developing the potential of women.

## ARE YOU A WOMAN TO WATCH?

2017 marked record attendance for the Women to Watch series. The series, which focused on "Building a Better You," averaged 60 or more attendees. This year's offerings included sessions on stress management, personal advocacy, communications, financial health, and more!

Junior League members who attend five sessions (or more) graduate from the program during the May General Membership Meeting. Attendance at the Women's Leadership Summit counts for two sessions. This year's Women to Watch series was sponsored by the UNC-Greensboro's Bryan School of Business and Economics. Read more about the partnership on pages 28-29.



# Keynote Spotlight: Glennon Doyle Melton



Glennon Doyle Melton  
Keynote Speaker

Glennon Doyle Melton is the author of the inspiring and hilarious New York Times bestselling memoir, *Carry On, Warrior*, and the #1 New York Times bestselling memoir *Love Warrior*, which was chosen as one of Oprah’s Book Club picks for 2016. She is the founder of Momastery.com, an online community where thousands of readers meet daily to experience her shameless and laugh-out-loud funny essays about marriage, motherhood, faith, addiction, recovery, and serving the marginalized. She is also the creator and president of Together Rising, a non-profit organization that has revolutionized on-line giving through “Love Flash Mobs” and has connected countless families in need with millions of dollars in critical resources.

Glennon became a sensation when her personal essays, which give language to our universal (yet often secret) experiences started going viral. Her hilarious and poignant observations have been read by millions, shared among friends, discussed at water coolers and have now inspired a social movement. Glennon is a regular contributor to The Huffington Post and other publications. *Carry On, Warrior*, Glennon and her philanthropic work have been featured on The Today Show, The Talk, and NPR as well as in *Ladies’ Home Journal*, *Woman’s Day*, *Glamour UK*, *Family Circle*, *Parents Magazine*, *American Baby*, and *Newsweek*, to name just a few.

Glennon expresses universal truth through storytelling, giving voice to our shared experiences and allowing us to feel known. She invites us to believe in ourselves, to be brave and kind, to let go of the idea of perfection and to stop making life harder by pretending it’s not hard. She easily expresses what so many of us think, but would not dare say aloud.

Glennon lives in Florida with her family.



WHEN:  
April 25, 2016

WHERE:  
Grandover Resort  
& Conference Center  
1000 Club Road  
Greensboro, NC 27407

TO SPONSOR, PURCHASE  
TICKETS, OR FOR MORE  
INFORMATION:  
[www.JLGwomensummit.org](http://www.JLGwomensummit.org)



**Breakthrough Besties**

Writing a book? Launching a business?  
Directing a film? Starting a blog?  
You are 85% more likely to be successful when your goals are shared and supported.

Breakthrough Besties is the online, peer coaching program where you are matched with an accountability partner. Together, you’ll create momentum towards your creative dreams faster than you could on your own.

Sign up by May 5  
[www.BreakthroughBesties.com](http://www.BreakthroughBesties.com)

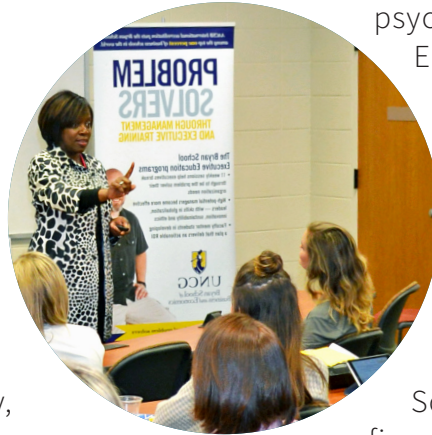
A percentage of the proceeds from the program will benefit the JLG’s 90th Anniversary.

# PARTNERS IN PERSONAL & COMMUNITY DEVELOPMENT

Submitted by the Bryan School of Business & Economics

People follow character, not titles. That's the mantra of Michelle Gethers-Clark, an accomplished corporate executive and community leader who inspired about 70 Junior League of Greensboro (JLG) members and guests to recognize the power and influence they yield regardless of the position they hold or role they play in a company, organization, or even family.

Gethers-Clark's dynamic October 2016 presentation on being a better self-advocate was the second of six lectures planned for the 2016-17 Women to Watch (W2W) series, the JLG's signature professional development program open to League members and women in the community. Other fall sessions include "Communicating for Results" with seasoned communications counselor Karen McNeill, head of the McNeill Communications Groups, and "Stress Management" with licensed



psychologist Dr. Vanessa Abernathy-Enoch. Those who attend at least five lectures receive a designation they can highlight on their resumes.

This year—the eight year of the W2W program—the series is being sponsored by UNC-Greensboro's Bryan School of Business and Economics. The Bryan School is hosting and providing financial support for all six events. For the JLG, W2W is a natural extension of the organization's legacy of developing women leaders who can uplift the community. For the Bryan School, supporting the program is an obvious way to help fulfill its own mission, which includes an emphasis on community engagement, professionalism, personal development, and service (which is the University's motto).

The presence of many Bryan School graduates and other Spartans among the JLG





membership was a significant factor when organizers decided to seek an outside sponsor for W2W. The Bryan School has also been a previous sponsor of the annual Women’s Leadership Summit, a day-long leadership and professional development opportunity held each Spring and open to all women in the community. Sponsoring the W2W series has led to a deeper connection between the two organizations.

**Did you know?**  
**50% of Bryan School students are female. In fact, the Bryan School ranked #2 for most female MBA students in the U.S. in 2015, according to US News.**

“We’ve never had a partnership with any other organization like we do with the Bryan School,” said Julia Cox, Leadership Development Committee Chair. “We really wanted to take the W2W program to the next level, and we thought of the School as a great fit in part because a number of our members and sustainers work at UNC-G or are alumna.”

**For more information on ways your business can connect with the Bryan School, contact Bramley Crisco at 336-334-4159 or bkcrisco@uncg.edu.**

Likewise, Joe Erba, Assistant Dean for External Affairs, views the partnership the school has forged with JLG as mutually beneficial.

“They are focused on developing leaders, and so are we,” he noted. “They serve individual members by creating leadership opportunities, as well as outreach; as do we. And their goal of engaging with the business community is consistent with ours.”

In the Bryan School, students are provided with opportunities to engage with the business community through employer networking

events, internships, and consulting projects. In the last five years, more than 500 students from the Bryan School have shared their knowledge and skills with approximately 100 area companies, providing consulting services with a total market value of hundreds of thousands of dollars. The projects are mutually advantageous, as the companies receive solutions from the Bryan School’s exceptional problem solvers while the students grow from the opportunity to explore real-world

business challenges. The Bryan School is looking to grow its network of participating companies and invites those who may be interested to get in touch.



The School also serves the business community by sharing the results of its faculty research via presentations open to the public. A newly formalized program of “Ed Talks with Thought

Leaders” is an opportunity for local business leaders to hear professors and staff discuss the results of recent research they’ve done on a wide variety of business related topics, from the challenges of working with millennials to best practices in cyber security.

One of the biggest impacts of the Bryan School occurs every May and December, when graduates leave commencement exercises with diplomas in hand. Since the School’s founding in 1969, it has produced over 24,000 graduates. Many of these alumni have chosen to put down roots in the Triad and other North Carolina communities, investing their human capital in North Carolina’s future.

“We become successful when the people who live here become successful,” Erba said.



**CARLEY SWAIM**  
President

# JUNIOR LEAGUE LEADERS

Our Committed, Forward-Thinking Servant Leaders Guide the Junior League of Greensboro in 2016-2017



**KELLY MCKEE**  
President-Elect



**BRITTANY MIDYETTE**  
Community Vice President



**ERIN JUSTAD**  
Finance Vice President



**PEG HALL WILLIAMS**  
Personnel Vice President



**SUSIE BOLES**  
Corresponding Secretary



**TERESA MARIE RUSSELL**  
Recording Secretary



# Board of Directors



**VANESSA RODULFO**  
Member at Large



**MAGGIE WISCO**  
Member at Large



**SARAH HILTY**  
Bargain Box Chair



**FRANCES F. RODENBOUGH**  
Communications Chair



**LAUREN MARSHALL**  
Community Programs  
Chair



**SAMANTHA MAGILL**  
Diversity & Inclusion  
Chair



**MARY LESA PEGG**  
Donor Development  
Chair



**ERIN KENNEDY**  
External Planning Chair



**JULIA COX**  
Leadership Development  
Chair



**ALEX PAPPAS**  
Marketing & Public  
Relations Chair



**HEATHER HANKINS**  
Meeting Arrangements  
Chair



**BRITTANY SEMONES**  
Membership Chair

# Board of Directors



**LAURA CASHWELL**  
Nominating Chair



**SHAWNA TILLERY**  
Placement Chair



**ELIZABETH FREEZE**  
Public Affairs Chair



**JENILEE FLEETWOOD**  
Special Events Chair



**MEGAN CRAVEN**  
Treasurer

# three | 2016 OUTSTANDING WOMEN HONORED

*Each year the Junior League of Greensboro (JLG) presents awards to outstanding members.*

*In 2016, Laura Sample Cashwell was honored with the Kathleen Price Bryan award, Mary Lesa Pegg was awarded with the President's Service Award, and Lauren Davidson was recognized with the Provisional "Above and Beyond the Call" award.*

*The JLG congratulates our members who were recognized with these prestigious awards in 2016.*



## **KATHLEEN PRICE BRYAN AWARD: LAURA CASHWELL**

Each year the League awards the Kathleen Price Bryan Award to a deserving Active member who demonstrates tremendous dedication to both the League and

to the community-at-large. The 2015-16 award recipient is Laura Sample Cashwell.

A brief list of her past placements include Placement Assistant Chair, Placement Chair, Transfer Committee Co-Chair, External Planning Program Researcher, Executive Committee Community Vice President, Nominating Committee Member, and Issue



Based Community Program Development Committee Member. Beyond her service to the League, Cashwell serves on the Sternberger PTA's beautification committee, is an active member of First Baptist Church, where she serves regularly on the Children's Ministry Team, and is certified as an Alight Guide Peer Mentor™ through the Alight Foundation at Cone Cancer Center.

Fellow league members not only look up to Cashwell; they genuinely like her. She gifts those around her with her ability to be present and in the moment. You leave a conversation with her feeling heard and valued as a person. There is nothing pretentious about her. She is authentic to her core and models humility, grace, and kindness.

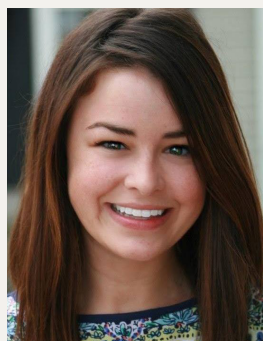


### **President's Service Award: Mary Lesa Pegg**

The President's Service Award is to be given to an Active member, in good standing, of the League for her extraordinary work within the League by going above and beyond

either in her given placement or any other area of service within our League. The 2015-16 President's Service Award winner, Mary Lesa Pegg, has worked tirelessly since before the 2015-16 League year even began. She has demonstrated a passion for leadership development since she joined in 2014 and has continually stepped up to help others regardless of her other League commitments. According to Kara Jacobs, Pegg's leadership committee chair, "She has wonderful energy but balances it with a sincere care for the best interest of the League. She is not all business and not all pleasure but manages to find that perfect balance. It is my sincere hope that we

will work together in the future, whether in the League or otherwise. She's like the little sister I never had."



### **Provisional "Above And Beyond the Call" Award: Lauren Davidson**

The "Above and Beyond the Call Provisional Award" recognizes a Provisional member who went beyond expectations and requirements and committed fully to the League and to the Provisional process. The 2015-16 award recipient is Lauren Davidson.

Originally from Statesville, NC, Davidson attended Appalachian State University where she studied English, was an active member of the Delta Zeta sorority, and a varsity cheerleader. After graduation, Davidson experimented with many different career paths until finding her true passion—writing. While managing a retail store, she found time to pursue freelance writing, where she actively wrote for many publications including: *Deep South Magazine*, *Iredell Living*, *Guilford Women*, and her own weekly column at the Statesville Record and Landmark. Most recently, Davidson assisted in the redesign of the Lowes Home Improvement website and is now the Assistant Editor of Gifts and Decorative Accessories here in Greensboro. She is a natural philanthropist and entrepreneur, skills she learned from her late father Chris Davidson. Chris led by example, teaching her the value of hard work, perseverance, and giving back to the community. These are values that have shaped her into an exceptional, charismatic leader. Davidson is instrumental in leading the JLG book club and currently serves as Monday Minute editor.

The Junior League of Greensboro, Inc.

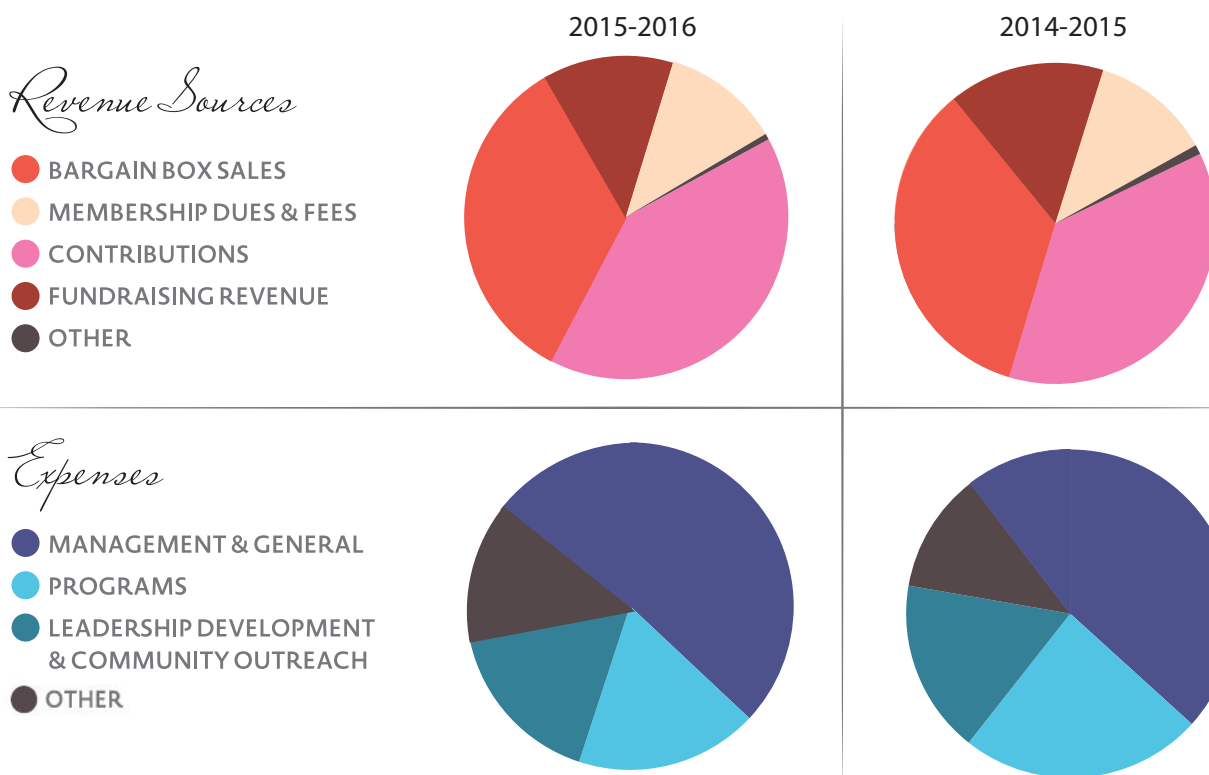
# 2015-2016 ANNUAL REPORT

## Statement of Activities For the Years Ended May 31, 2016 and 2015

REVENUES, GAINS & OTHER SUPPORT	2016	2015
SALES - BARGAIN BOX THRIFT STORE	\$ 310,992	\$ 338,413
Less: Value of donated items sold	281,739	309,521
Gross profit on sales	29,253	28,892
MEMBERSHIP DUES AND FEES	\$ 107,669	\$ 118,840
CONTRIBUTIONS		
Cash	1,500	5,000
Materials and inventory for thrift store	293,283	308,453
In-kind donations	76,785	47,929
FUNDRAISING EVENTS		
Revenues	119,399	154,541
Interest income	(34,848)	(50,937)
OTHER REVENUES (LOSSES)		
Interest income	5,487	4,684
Unrealized gain (loss) on investments	(13,968)	4,811
<b>TOTAL REVENUES, GAINS &amp; OTHER SUPPORT</b>	<b>\$ 584,560</b>	<b>\$ 622,213</b>
EXPENSES	2016	2015
PROGRAM SERVICES		
Community projects	\$ 116,236	\$ 148,451
Training and education	105,685	106,363
MANAGEMENT AND GENERAL	95,685	73,647
FUNDRAISING		
Bargain Box thrift store	238,278	228,205
Other	88,256	64,682
<b>TOTAL EXPENSES</b>	<b>\$ 644,140</b>	<b>\$ 621,348</b>
<b>INCREASE IN UNRESTRICTED NET ASSETS</b>	<b>(59,580)</b>	<b>865</b>
NET ASSETS, BEGINNING OF YEAR	1,269,685	1,268,820
NET ASSETS, END OF YEAR	\$ 1,210,105	\$ 1,269,685

## Statements of Financial Position May 31, 2016 and 2015

ASSETS	2016	2015
CURRENT ASSETS		
Cash and cash equivalents	\$ 622,638	\$ 659,127
Pledges receivable, net of allowance \$0 in 2016 and \$242 in 2015	-	13,906
Accounts receivable	35,336	64,258
Accrued interest income	257	154
Bargain Box inventory	85,756	74,213
Prepaid expenses	23,651	17,244
<b>TOTAL CURRENT ASSETS</b>	<b>\$ 767,638</b>	<b>\$ 828,902</b>
PROPERTY & EQUIPMENT		
Furnishings and equipment	\$ 110,772	\$ 110,772
Store fixtures	24,596	24,596
Land	130,000	130,000
Building	595,300	595,300
	860,668	860,668
Less: Accumulated depreciation	252,469	233,272
<b>TOTAL PROPERTY &amp; EQUIPMENT</b>	<b>\$ 608,199</b>	<b>\$ 627,398</b>
OTHER ASSETS		
Endowment fund	143,965	162,292
Deposits	1,850	1,592
<b>TOTAL OTHER ASSETS</b>	<b>\$ 145,815</b>	<b>\$ 163,884</b>
<b>TOTAL ASSETS</b>	<b>\$ 1,521,652</b>	<b>\$ 1,620,182</b>
LIABILITIES	2016	2015
CURRENT LIABILITIES		
Current portion of long-term debt	\$ 6,000	\$ 6,000
Accounts payable	13,916	17,123
Sales taxes payable	1,395	1,631
Unearned revenue	94,237	108,824
<b>TOTAL CURRENT LIABILITIES</b>	<b>\$ 115,548</b>	<b>\$ 133,578</b>
LONG-TERM LIABILITIES		
Note payable	\$ 195,999	\$ 216,919
<b>TOTAL LIABILITIES</b>	<b>\$ 311,547</b>	<b>\$ 350,497</b>
NET ASSETS	2016	2015
UNRESTRICTED	\$ 1,066,140	\$ 1,107,393
UNRESTRICTED – board designated	143,965	162,292
<b>TOTAL NET ASSETS</b>	<b>\$ 1,210,105</b>	<b>\$ 1,269,685</b>
<b>TOTAL LIABILITIES &amp; NET ASSETS</b>	<b>\$ 1,521,652</b>	<b>\$ 1,620,182</b>



## 2016-17 Mission Milestones

- Advanced our mission with a membership of approximately 1,000, of which more than 217 were active members
- Celebrated our League’s 89th anniversary
- Hosted two major fundraisers - Seventh Annual Touch A Truck Event and Seventh Annual Women’s Leadership Summit
- Held a Task Force meeting with the purpose of selecting community programs focused on aging for the 2017-2018 League year
- Placed approximately 60 volunteers into the community and funded 7 community programs and grants with more than \$27,000

## Special Thanks

Special thanks to Alex Pappas (2016-17 Marketing and PR Chair) and the Marketing and PR Committee.

This year they collaborated with Emma Vogelsinger to design the 2016-17 JLG t-shirt.



Emma says, "I've always painted, doodled, colored and drawn ever since I was a little girl. I think doing anything repetitively for that long makes you good at it, but that was never even the goal, until recently, when I started my Etsy shop 'Emma Lee and Co.' I've began taking on small commissioned jobs for my art here and there in the community. I'm so happy to be able to use my artistic abilities to benefit the JLG."

# CRAFTING NEW CONNECTIONS

By Angela Ben-Zekry

The Junior League of Greensboro (JLG) has built a thriving community over its 90 years of existence. Not only is the League a group of women devoted to volunteerism and community impact, but it is also a group of women committed to building friendships and providing avenues for networking. That's where CONNECTIONS comes in. CONNECTIONS events give members an opportunity to meet each other outside of General Membership Meetings and their committees. These events strengthen existing relationships and create new ones, whether you are a Provisional member, an Active member or a Sustainer. This year, Co-Chairs Emma Vogelsinger and Jessi Parker are bringing a mix of old and new opportunities for members.

"We would love to see the women of the League branch out during CONNECTIONS. I would like for members to meet new people and try new things!" Parker said. "We want to find a variety of events and provide something everyone can enjoy."

CONNECTIONS events give members a chance to take a break from the day-to-day commitments in their lives. 2016-17 events started with CONNECTIONS between committees and members: the September event was a joint event between the 90th Anniversary Committee, who hosted a kick-off shopping event at Swoozies, followed by a CONNECTIONS event at WineStyles. This gave members an opportunity to come together



and appreciate the foundation of the League that was built by the generations of members before us.

"My goal for these events, simply put, is to provide a venue and activity for our women once a month to come out and have a really great time with each other," Vogelsinger said.

"I want to create opportunities for us to get to know even more of the amazing members of the League. The women of the JLG spend so much time working tirelessly for the great causes we support, and it's such a great honor to be the ones creating a way to say 'thank you' to our women by providing ways for them to relax and have fun together."

The chairs planned events that will help members meet others and learn new things about our community. The Fit Tribe boot camp gave members an opportunity to learn more about health fitness, and it gave members an opportunity to explore the brand new LeBauer Park downtown. A November event at The Mad Platter allowed members to get their creative juices going by painting pottery, and some friendly competition came out during the December Gingerbread House Competition at the Coliseum. From the boot camp to jewelry making to high tea at the O'Henry, there's something fun for every member to enjoy.

Each member of the League has a different definition of relaxing and having fun, and that's why CONNECTIONS events are so important.



# JLG BENEFITS FROM INVOLVEMENT OF CIVIC LEADERS

Many thanks to the civic leaders providing support and guidance to our programs as members of the 2016-17 Community Advisory Board.



**MARGARET ARBUCKLE**  
Retired Executive Director  
Guilford Education Alliance  
JLG Sustaining Member



**CYNDY HAYWORTH**  
Director of Operations  
Downtown  
Greensboro Inc.



**JIM MELVIN**  
President  
Joseph M. Bryan  
Foundation



**RANDY SHAVER**  
Superintendent of Schools  
(Northern Region)  
Guilford County Schools



**SUSAN SCHWARTZ**  
Executive Director  
The Cemala Foundation

## With Gratitude to our 2015-2016 individual contributors\*

Margaret Allen	Andrew & Stephanie Clifford	Jessica Gullede	Brittany Midyette	Norman Samet
Katie Auten	Julie Copeland	Christon Halkiotis	Carrie Miller	Virginia Saslow
Kristin Bell	Shea Cox	Susanne Hall	Jennifer Morrow	Brittany Semones
Ann Bencini	Julia Cox	Andrea (Brooke) Harwood	Martha Newton	Rita Sharpe
Angela Ben-Zekry	Lauren Davidson	Catherine Henry	Heather Oakley	Allison Speckhard
Angela Bighinatti	Doris Dempsey	Sarah Hilty	Alexandra Pappas	Pam & David Sprinkle
Susan Blake	Peter & Cara Derounian	Muriel Inabnet	Rebekah Parker	Carley Swaim
Jennifer Bogacki	Paulette Evans	Jamie Jonas	Caroline Pearce	Heather Terwillegar
Katherine Bonney	Emily Faucher	Corinne Jones	Mary Lesa Pegg	Chandler Thompson
Robin Brittain	Jenilee Fleetwood	Erin Justad	Florence H. Phillips	Shawna Tillery
Andrea Brooks	Kimberly Michelle Fletcher	Camille Kluttz-Leach	Ashley Powell	LaDonna Tisdale
Jennifer Brown	Allison Fligel	Megan LeFavre	Leatrice Priest	Katie Tucker
Leigh Anne Bullin	Kelly Fredrick	Heidi Little	Cynthia Ramsay	Toshia Wagner
Paige Butler	Elizabeth Freeze	Sam Magill	Cathy Rice	Rudiger Waldner
Patricia Byrne	Sarah George	Sarah Marks (Bowman)	Lori Richardson	Michelle Walser
Lindsay Carlson	Amanda Gerber	Alejandra Marquez	Vanessa Rodulfo	Margaret White
Sally Cartwright	Marie Glover	Lauren Marshall	Meghan Rose	Jennifer Wilson
Leigh Ann Church	Gillian Goodman	Tommy Mayes	Kelley Rowland	Maggie Wisco
Ashton Clemmons		Kelly McKee	Teresa Russell	
Lynda Clifford				

## With Gratitude to our 2015-2016 corporate contributors\*

Anonymous	Charles Aris, Inc.	Honda Aircraft	Organize for Success, LLC	The Cemala Foundation
Ameriprise Financial	The Clifford Division of Clifford, Clendenin & O'Hale	Images by Amy	Preferred Childcare	The Club of Greensboro
Aubrey Home	Crown BMW	ITG Brands	Quaintance-Weaver Restaurants and Hotels	The Decal Source
Bank of NC	Dixon Hughes Goodman LLP	Jeri D'Lugin, JD*, CLU®, AEP	Ralph Lauren	The Fresh Market
Barnes & Noble	Events at Revolution	Joy Squad	Rio Grande	UNCG Bryan School of Business
Belk	Gilliam, Coble & Moser LLP	Kaley Orthodontics	Sheetz	United Healthcare
Bennett College	Got You Floored	Kotis Properties	Stearns Financial Group	Volvo Group North America
Benson, Brown & Faucher, PLLC	Greensboro Center for Pediatric Dentistry	New Bridge Bank	Swoozies	Zuraw Financial Advisors
Butler CPA	Greensboro Day School	Northwest Pediatrics	Tate Plumbing	
Caldwell Academy		Novant Health	Terminix	
Canterbury School		Old Dominion Freight Line, Inc.		
Carolina Bank				
Carolina Pediatrics				

\*Every effort was made to ensure the accuracy of this information. Any errors or omissions were not intentional. Should you notice an error in the information listed, we ask that you notify us at (336) 852-5542.

The  
**BRYAN SCHOOL**  
*develops*  
**EXCEPTIONAL  
 PROBLEM  
 SOLVERS**

**BUSINESSES WANT THEM.**  
**COMMUNITIES NEED THEM.**



[Bryan.UNCG.edu](http://Bryan.UNCG.edu)



- Only 1% of business schools worldwide have the Bryan School's dual AACSB accreditation for both business and accounting
- #2 Best Online Graduate Computer Info Program in NC (*US News* 2017)
- #3 Best Part-Time MBA Program for a Public University in NC (*US News* 2017)
- #4 Fashion Merchandising & Design School in the South (*Fashion-Schools.org* 2016)
- #3 in NC - Best for Vets (*Military Times* 2016)



**NAME THAT ROOM**

contact us to learn more about which rooms are available

**\$1,000  
 BUY A BEAM**

**\$500  
 SIGN ME UP**

**\$250  
 BUILDING OUR FOUNDATION**

**\$150  
 'TIS THE SEASON**

**\$90  
 GIVE90**



<http://bit.ly/jlgpayments>

[laurentvance@gmail.com](mailto:laurentvance@gmail.com)  
[allisonspackhard@gmail.com](mailto:allisonspackhard@gmail.com)



**Happy 90th, JLG!**

**Jeanné Blaisdell,**  
 Realtor & Sustainer  
 336-383-8774  
[jeanneblaisdellrealtor.com](http://jeanneblaisdellrealtor.com)



**BERKSHIRE  
 HATHAWAY**  
 HomeServices

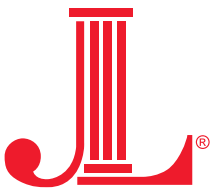
**Yost & Little Realty**  
*We make great neighbors.®*



**WORTH**  
 NEW YORK

**ASHLEY E. STATON**  
 Agency Owner/Stylist

336.706.4618  
[astaton@worthnewyork.com](mailto:astaton@worthnewyork.com)  
[www.worthnewyork.com/ashley-staton](http://www.worthnewyork.com/ashley-staton)



THE JUNIOR LEAGUE  
OF GREENSBORO, NC, INC.

3101 West Friendly Avenue  
Greensboro, NC 27408

RETURN SERVICE REQUESTED

NONPROFIT ORG.

U.S. POSTAGE

**Paid**

GREENSBORO, NC  
PERMIT NO. 90



Save the date:

*Let's Celebrate Our 90th Anniversary Together*

**Saturday, November 4, 2017**

**The Barn at Summerfield Farms**

Your contribution to the 90th Anniversary will build a better community. The money raised for the 90th Signature Fundraiser will support our mission and our community programs focused on Greensboro's aging population.

For more information, contact Kara Jacobs, 90th Anniversary Committee Chair  
at [karabjacob@gmail.com](mailto:karabjacob@gmail.com).